

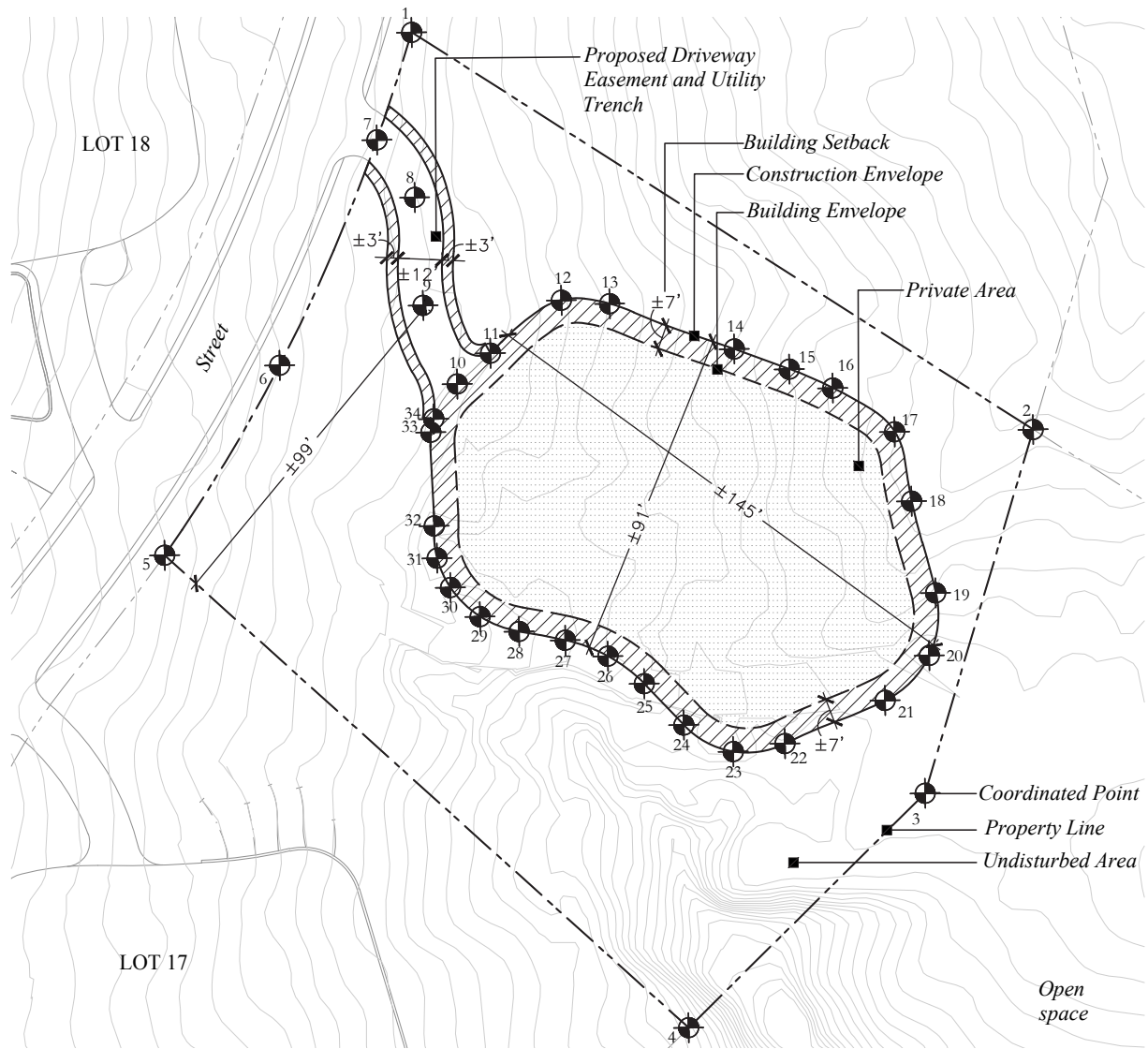
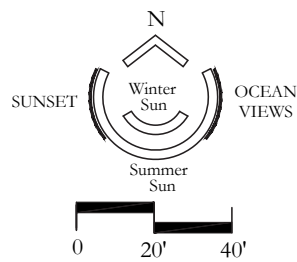
SOUTH COAST HOMESITE 16



CHILENO BAY
GOLF & BEACH CLUB

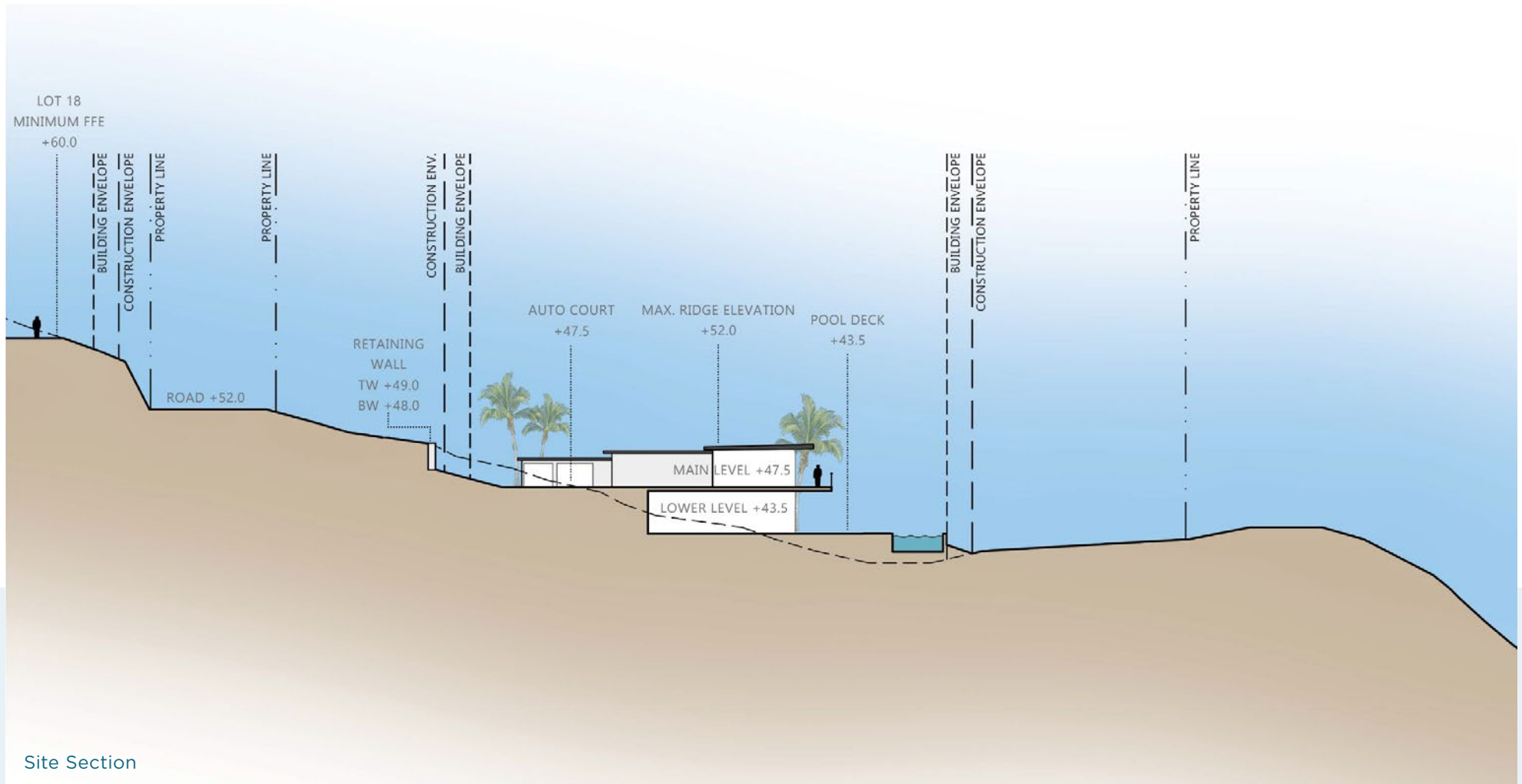
SOUTH COAST HOMESITE 16

| | |
|----------------------------|--------------|
| Total Lot Area | 34,440 SF± |
| Construction Envelope Area | 11,802 SF± |
| Private Area | 9,260 SF± |
| Maximum Floors | 2 |
| Minimum Pad Elevation | +43.5 Meters |
| Maximum Building Height | +52.0 Meters |

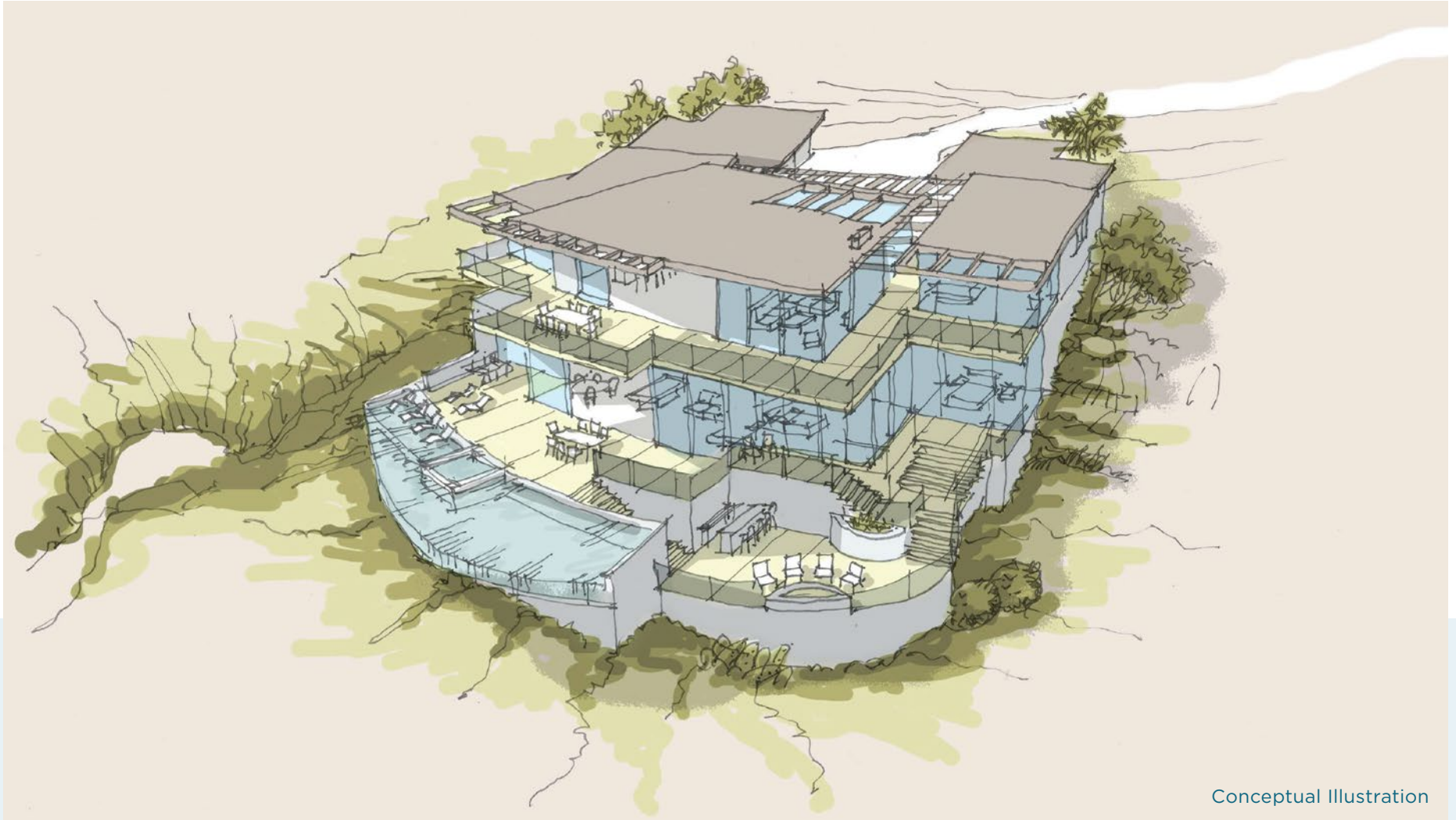


All linear or square footages for Vertical Construction Area within the homesite boundary lines are estimates only. This material is presented as being representational, only, of the Vertical Construction Area and is not intended as a substitute for onsite inspection and independent determination by owner of the attributes of the homesite, which are suitable for satisfying owner's intended purposes. The Vertical Construction Area boundaries, dimensions, areas, lot lines, topography and features and/or information shown on this diagram are approximate only, based upon information that was not prepared by VITA Planning and Landscape Architecture and Discovery Land Company and which has not been independently verified, and for information only. These diagrams are not a substitute for a lot survey, and no representation regarding the accuracy or completeness of the information shown on the diagram is made. The utility easements shown on this plan are preliminary and have not been finalized by the Project's civil engineer. The actual locations of the utilities may vary in the field, and accordingly, the utility easements depicted on this plan may require adjustments and/or additional utility easements(s) may need to be designated prior to or after closing.

SOUTH COAST HOMESITE 16



SOUTH COAST HOMESITE 16



Conceptual Illustration

SOUTH COAST HOMESITE 16



CHILENO BAY GOLF & BEACH CLUB



Renowned for having the most incredible waters in all of Los Cabos, Chileno Bay's many protected swimming beaches offer the ultimate in Outdoor Pursuits. With 1,260 acres of natural desert terrain and two miles of spectacular coastline, Chileno Bay promises authentically inspired residences along Cabo's most celebrated coast and a Private Club featuring an intergenerational membership structure.

THE PRIVATE CLUB

- Private Tom Fazio signature 18-hole championship golf course.
- Pristine oceanfront beach club, featuring:
 - New 27,000 square foot spa
 - Fitness center
 - Three resort-style swimming pools + adult lap pool
 - Casual and fine dining options
 - Personal concierge assistance
 - Tennis and pickleball courts, volleyball and signature Discovery baseball diamond.
- Hiking and mountain bike trails for all levels



Photos Clockwise from Top Left: Chileno Bay OP Team, Beach Club Pool, Golf Course



For more information please contact info@chilenobayclub.com
KM. 15 , Carret. Transp. C.S.L.-S.J.C. San Jose Del Cabo B.C.S. Mexico 23410
Mexico 011-624-144-0014 U.S. (858) 964-0818
chilenobayclub.com