

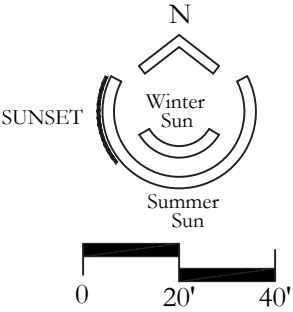
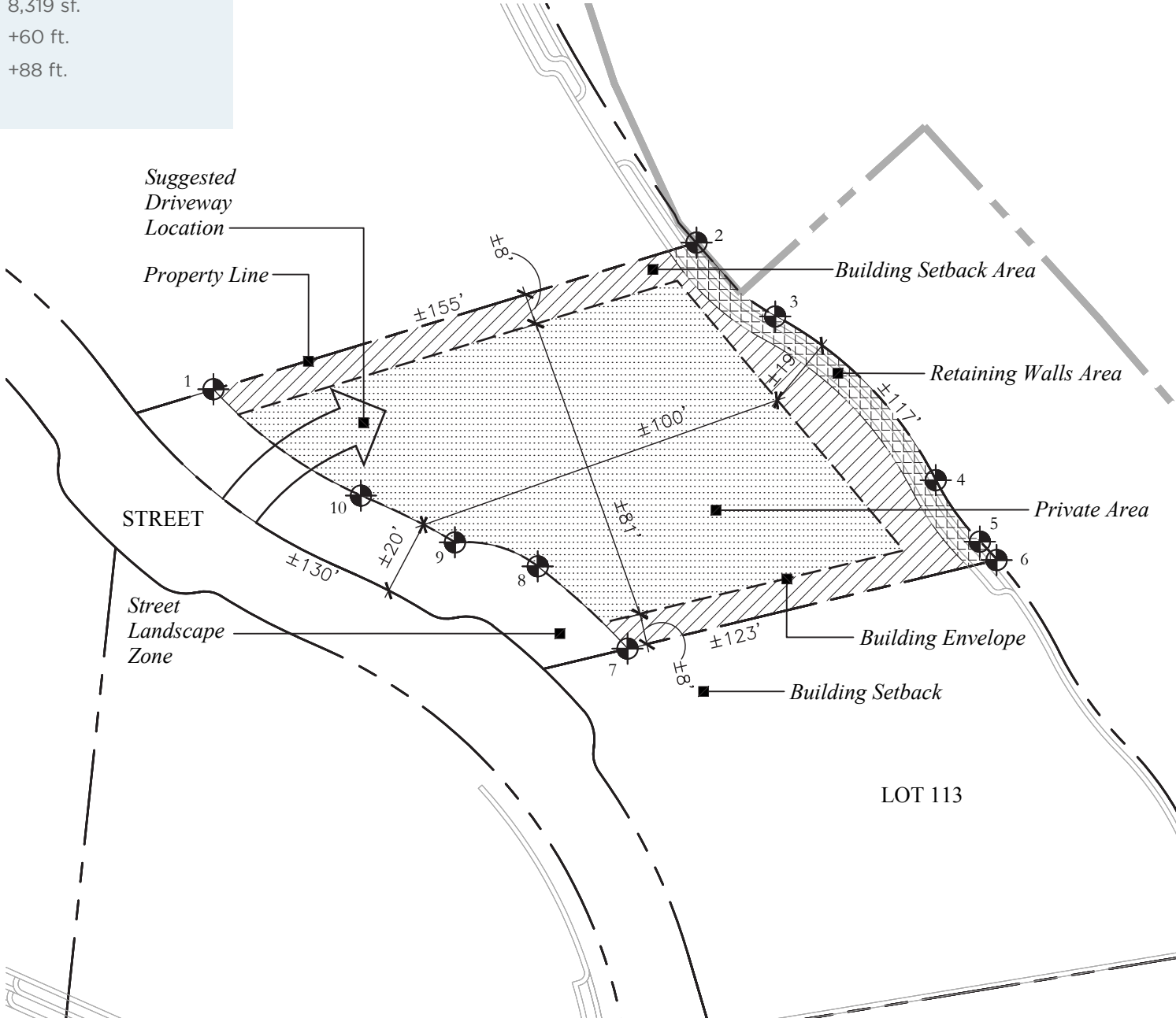
CHILENO POINT HOMESITE 114

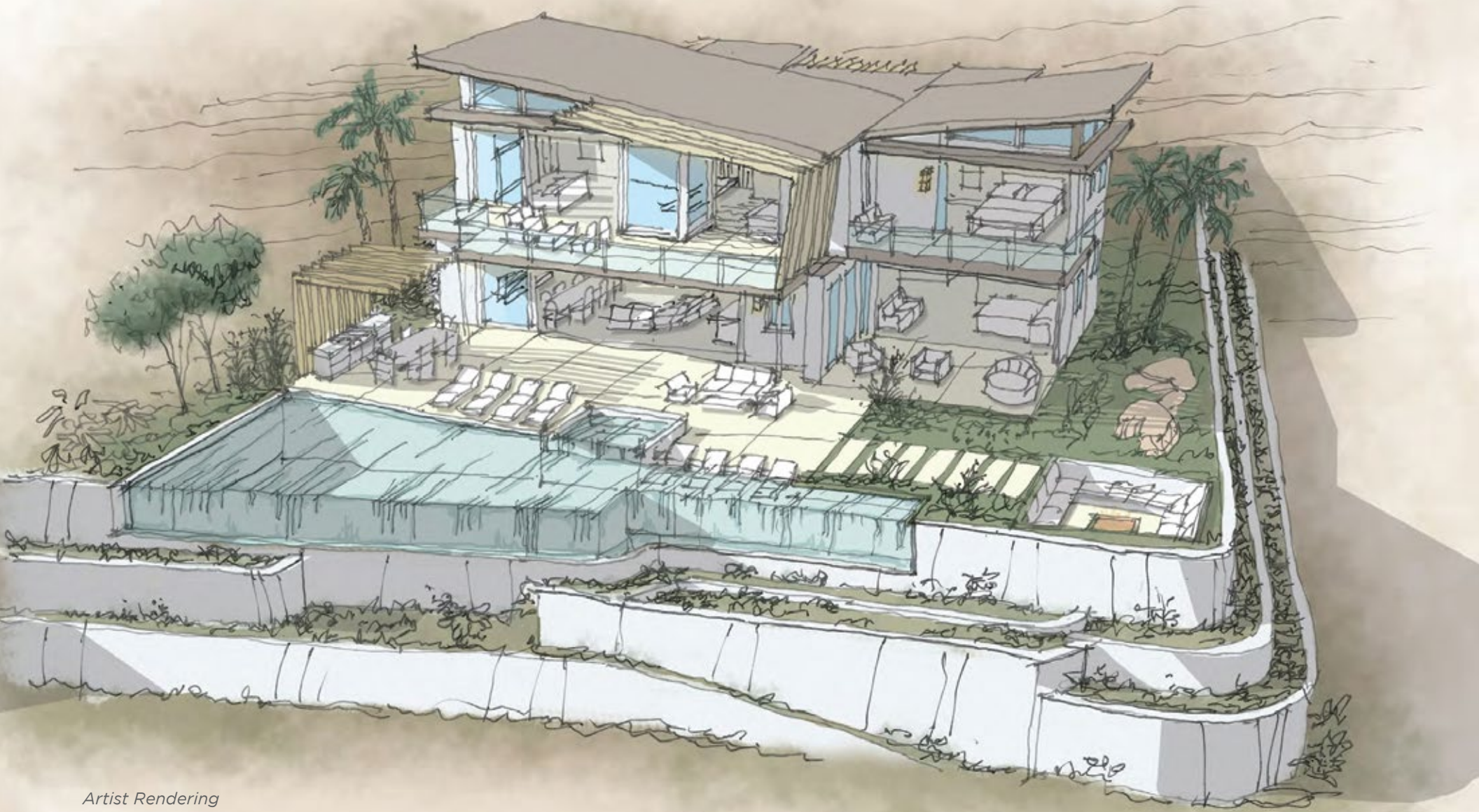


CHILENO BAY
GOLF & BEACH CLUB

CHILENO POINT HOMESITE 114

Total Lot Area	14,457 sf.
Building Envelope Area	8,319 sf.
Maximum Pad Elevation	+60 ft.
Maximum Building Height	+88 ft.
Two Story	





Artist Rendering

CHILENO POINT HOMESITE 114

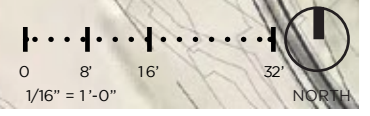
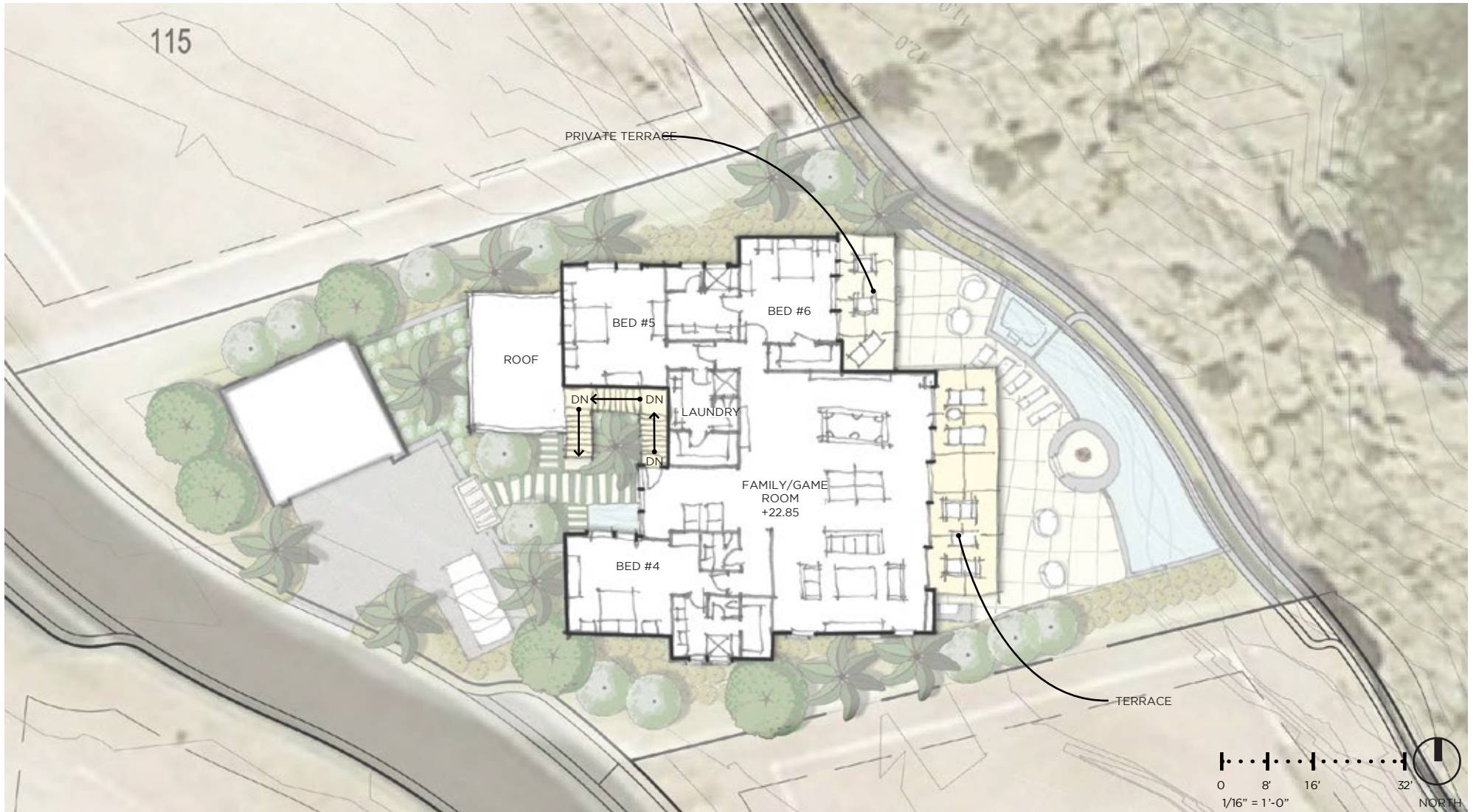
One of the last homesites available at the highest point of the historic Chileno Point neighborhood, this two-story custom built residence overlooks unparalleled views. The Sea of Cortez waves crash on stunning rock formations below, beautiful coastal lights illuminate the landscape to the East, and views of both sunrise and moonrise are a sight to see. This property offers tremendous opportunity to build an exceptional home next door to the Chileno Beach Club amenities.

MAIN LEVEL FLOOR PLAN



LOT 114- CONCEPT SITE PLAN

UPPER LEVEL FLOOR PLAN



LOT 114- CONCEPT SITE PLAN

CONCEPT IMAGES



CONCEPT IMAGES





CHILENO POINT 114

CHILENO BAY GOLF & BEACH CLUB



Renowned for having the most incredible waters in all of Los Cabos, Chileno Bay's many protected swimming beaches offer the ultimate in Outdoor Pursuits. With 1,260 acres of natural desert terrain and two miles of spectacular coastline, Chileno Bay promises authentically inspired residences along Cabo's most celebrated coast and a Private Club featuring an intergenerational membership structure.

THE PRIVATE CLUB

- Private Tom Fazio signature 18-hole championship golf course.
- Private oceanfront Beach Club, featuring:
 - Spa services
 - Fitness center
 - Three resort-style swimming pools + lap pool
 - Casual and fine dining options
 - Personal concierge assistance
 - Tennis and pickleball courts
- Hiking and mountain bike trails for all levels of enjoyment



Photos Clockwise from Top Left: Chileno Bay OP Team, Beach Club Pool, Golf Course

CHILENO POINT HOMESITE 114





CHILENO BAY
GOLF & BEACH CLUB

FOR MORE INFORMATION PLEASE CONTACT
info@chilenobayclub.com

www.chilenobayclub.com