



CHILENO BAY  
GOLF & BEACH CLUB

HILLSIDE VILLAS



Be among the first to make your home at Hillside Villas, Chileno Bay Club’s new seaside village. Experience living along the dramatic coast of Cabo’s Golden Corridor, with unobstructed views of the sparkling Sea of Cortez at your doorstep. Designed to evoke the scenic towns of the Amalfi Coast, this ‘community within a community’ will be walking distance to the future Glass Beach Club, with easy access to the beach and mountain trails.

A unique opportunity to become part of Chileno’s newest neighborhood, only a limited number of these spacious villas are now available.

WELCOME TO  
HILLSIDE VILLAS







## AN UNRIVALED LOCATION

Hillside Villas are within steps of intimate Glass Beach, a renowned gem among Cabo's beaches, and close to several of Chileno's best hiking trails. This will also be the site of the new Glass Beach Club, featuring a variety of amenities such as dining, pool, spa, and fitness.







## INDOOR ELEGANCE, OUTDOOR PANORAMA

With contemporary architecture inspired by Mediterranean hillside villages, these residences take full advantage of ocean views.

Floor-to-ceiling glass in bedroom and living areas reveal breathtaking vistas. Each unit features its own pool, a private courtyard entrance, and a golf cart garage, while interconnected pedestrian staircases provide access to the future Glass Beach Club and throughout the community.







# GENEROUS LIVING SPACE

With four or five bedrooms on two levels, spacious terraces, and private pools, this group of exclusive oceanfront villas represent the best of Chileno’s easygoing, elevated lifestyle.



## Building Summary

| BUILDING 1 | TYPE           | SQ FT AC | TERRACE | POOL | GARAGE |
|------------|----------------|----------|---------|------|--------|
| UNIT 1A    | 4 BED/2 STORY  | 4,570    | 2,228   | 484  | 269    |
| UNIT 1B    | 4 BED/ 2 STORY | 3,849    | 1,216   | 306  | 280    |
| BUILDING 2 | TYPE           | SQ FT    | TERRACE | POOL | GARAGE |
| UNIT 2A    | 5 BED/2 STORY  | 4,785    | 2,088   | 522  | 310    |
| UNIT 2B    | 4 BED/2 STORY  | 3,971    | 969     | 215  | 237    |
| UNIT 2C    | 5 BED/2 STORY  | 4,991    | 2,271   | 487  | 301    |
| UNIT 2D    | 4 BED/ 2 STORY | 4,092    | 969     | 215  | 258    |
| BUILDING 3 | TYPE           | SQ FT    | TERRACE | POOL | GARAGE |
| UNIT 3A    | 4 BED/ 2 STORY | 4,420    | 1,776   | 570  | 301    |
| UNIT 3B    | 4 BED/2 STORY  | 3,698    | 958     | 215  | 237    |



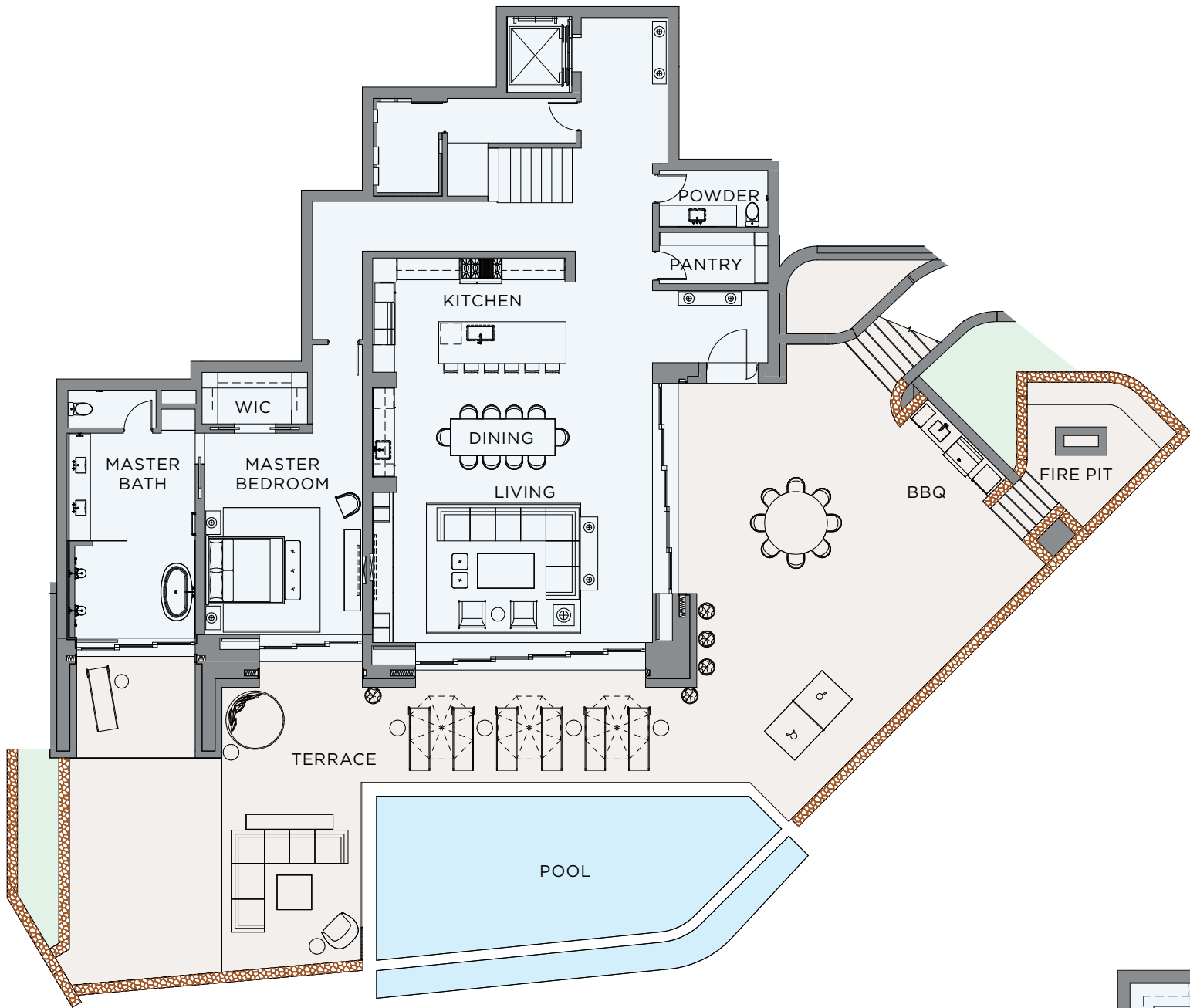
BUILDING 1

UNIT A (Lower Unit) - 4 BED/4.5 BATH

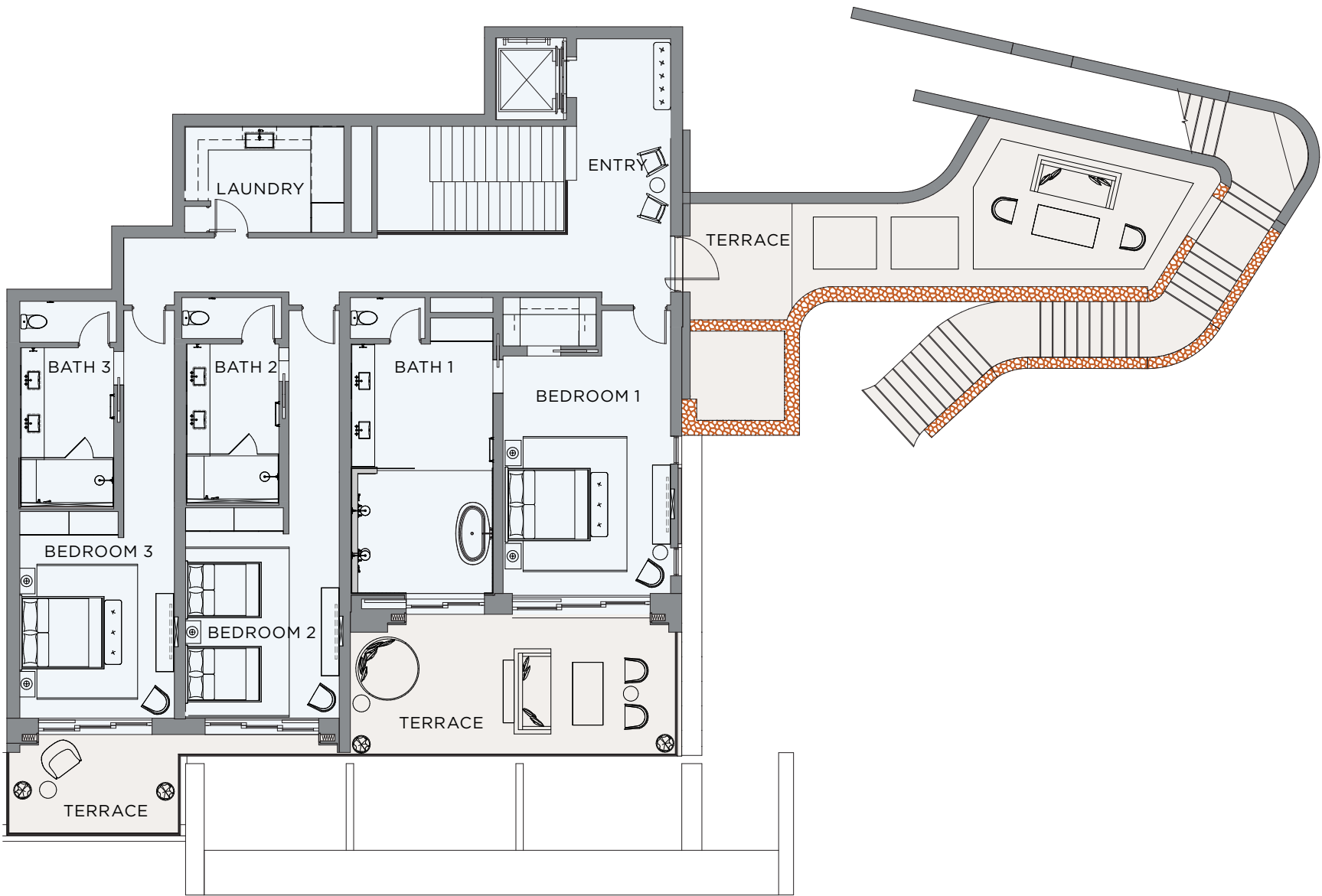
| SQ FT AC | TERRACE | POOL | GARAGE |
|----------|---------|------|--------|
| 4,570    | 2,228   | 484  | 269    |



ENTRY LEVEL

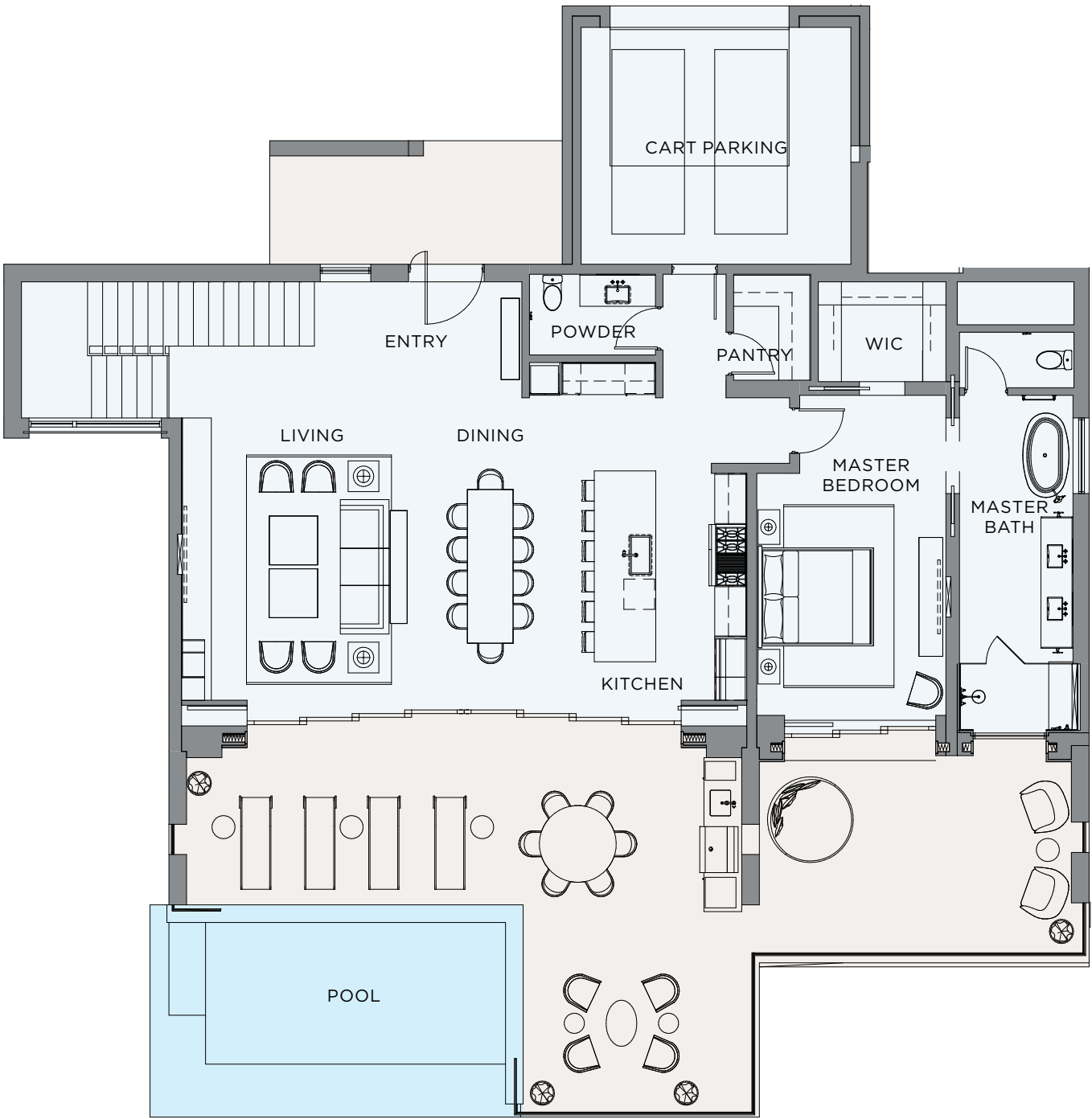


UPPER LEVEL

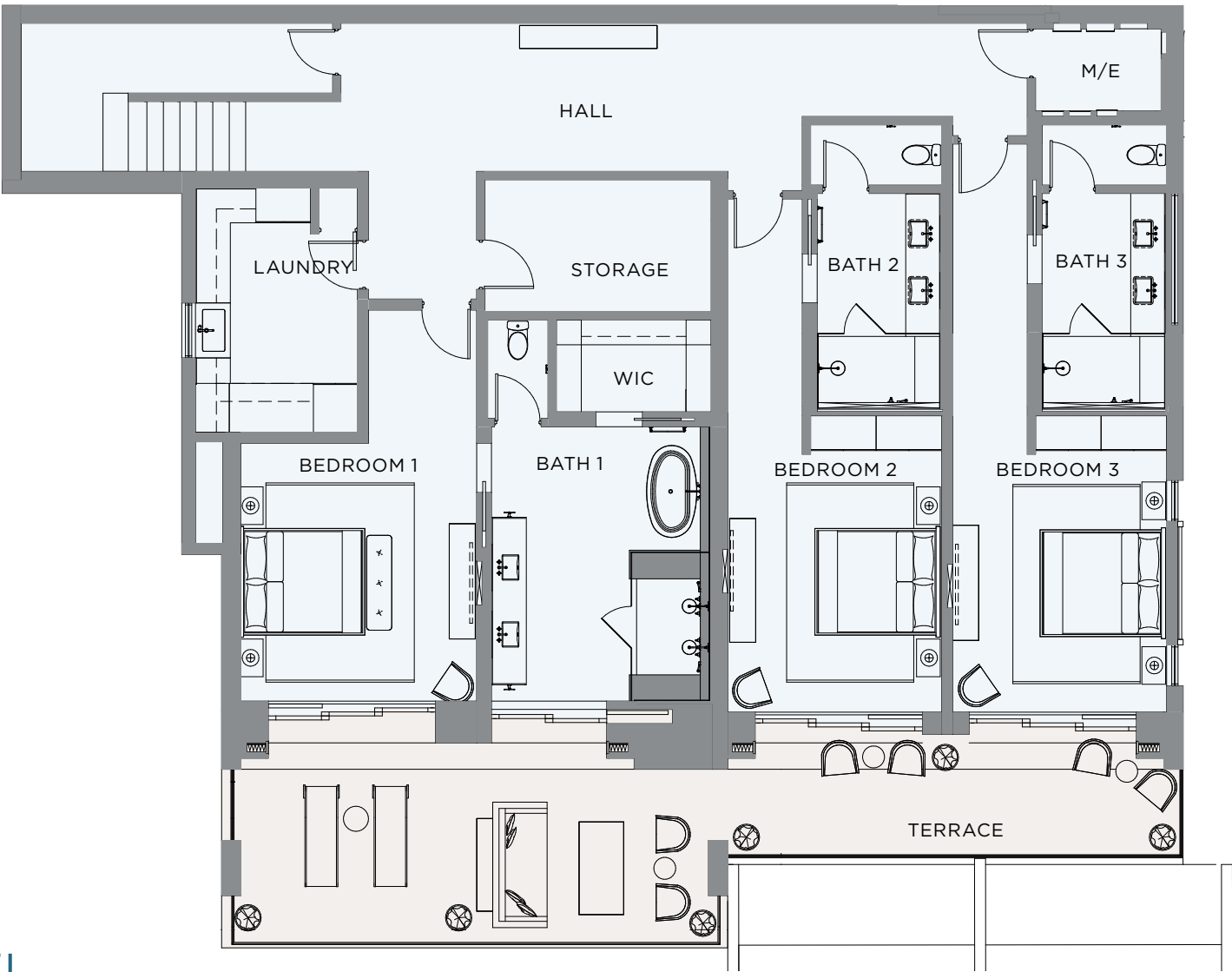




ENTRY LEVEL



UPPER LEVEL



BUILDING 1

UNIT B (Upper Unit) - 4 BED/4.5 BATH

| SQ FT AC | TERRACE | POOL | GARAGE |
|----------|---------|------|--------|
| 3,849    | 1,216   | 306  | 280    |





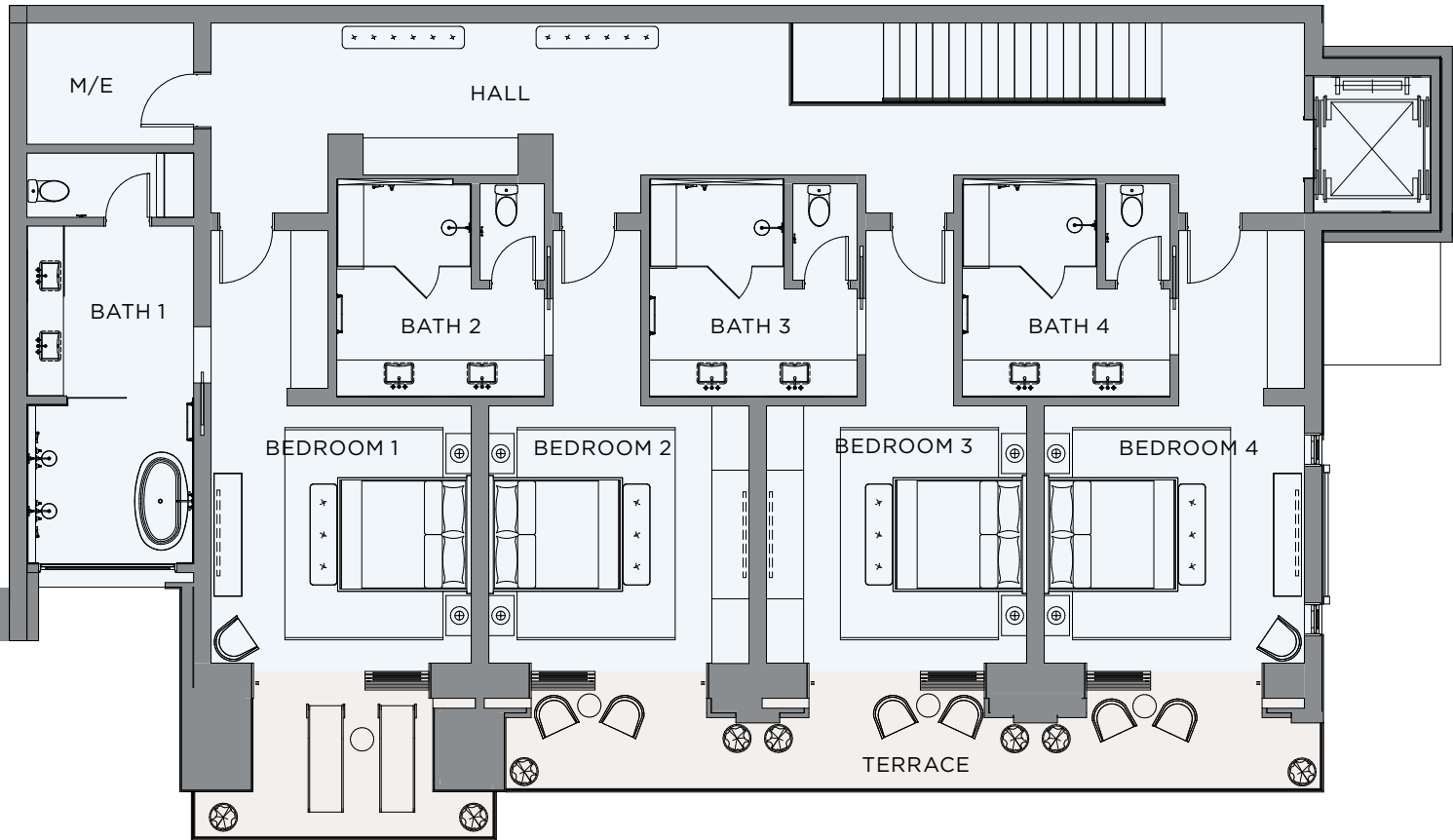
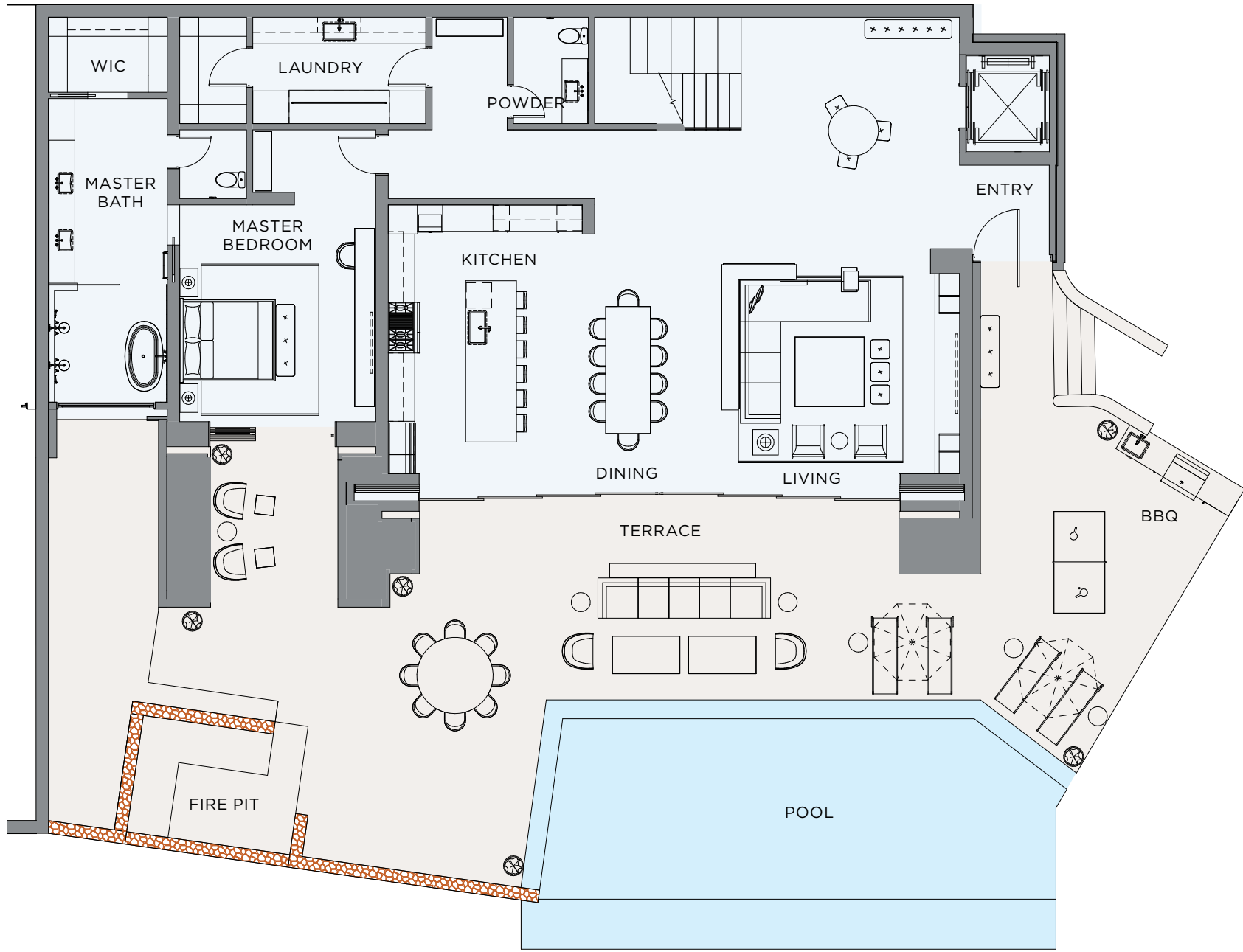
BUILDING 2

UNIT A (Lower Unit) - 5 BED/5.5 BATH

| SQ FT AC | TERRACE | POOL | GARAGE |
|----------|---------|------|--------|
| 4,785    | 2,088   | 522  | 310    |



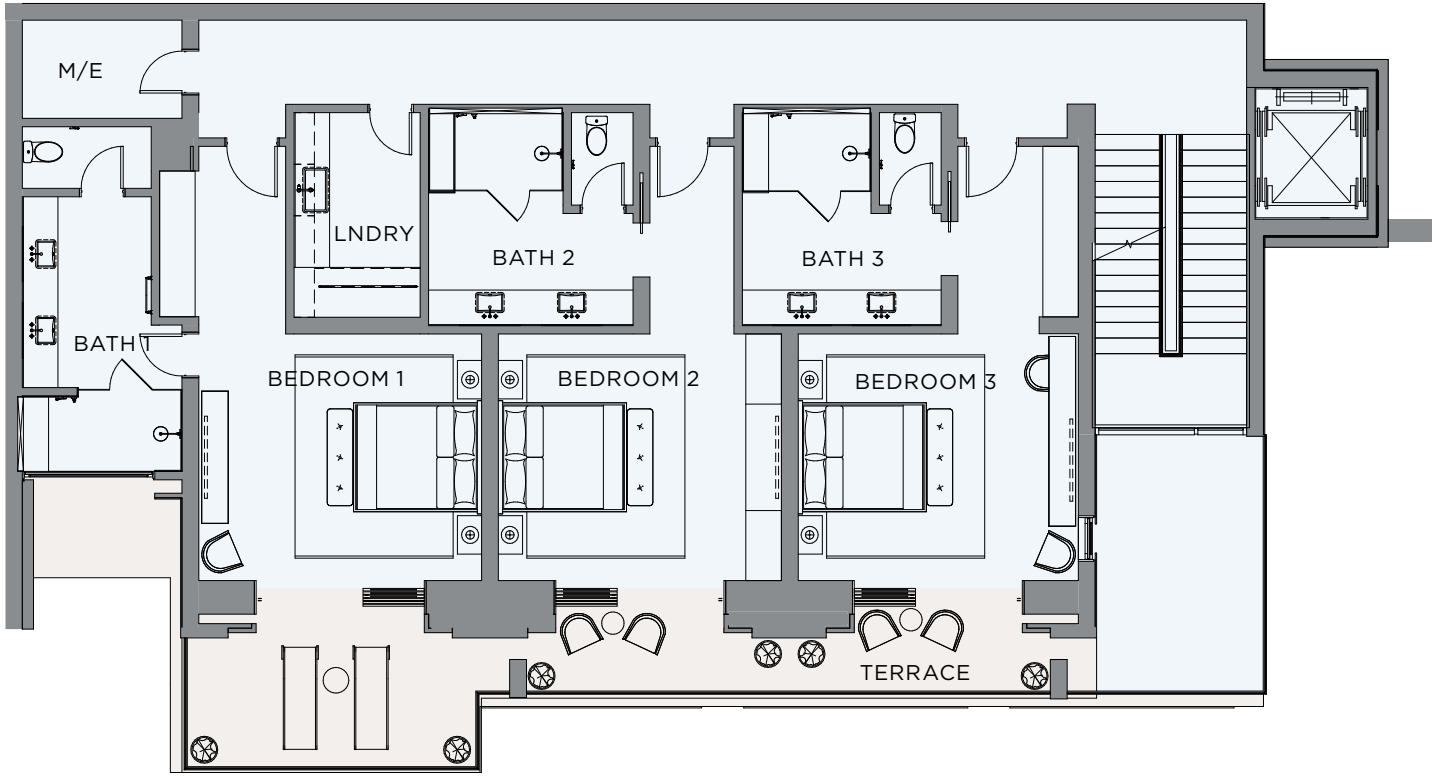
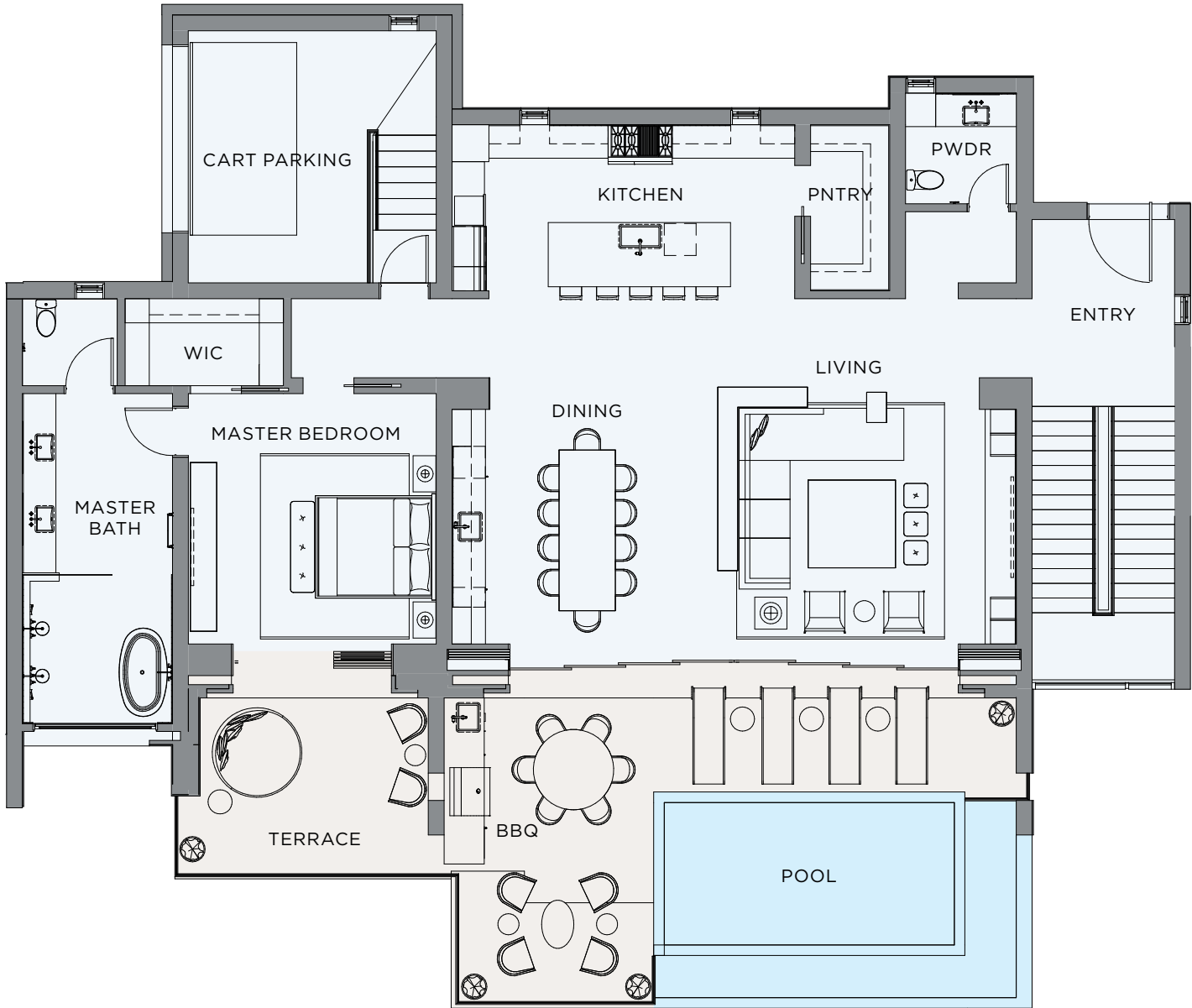
ENTRY LEVEL



UPPER LEVEL



ENTRY LEVEL

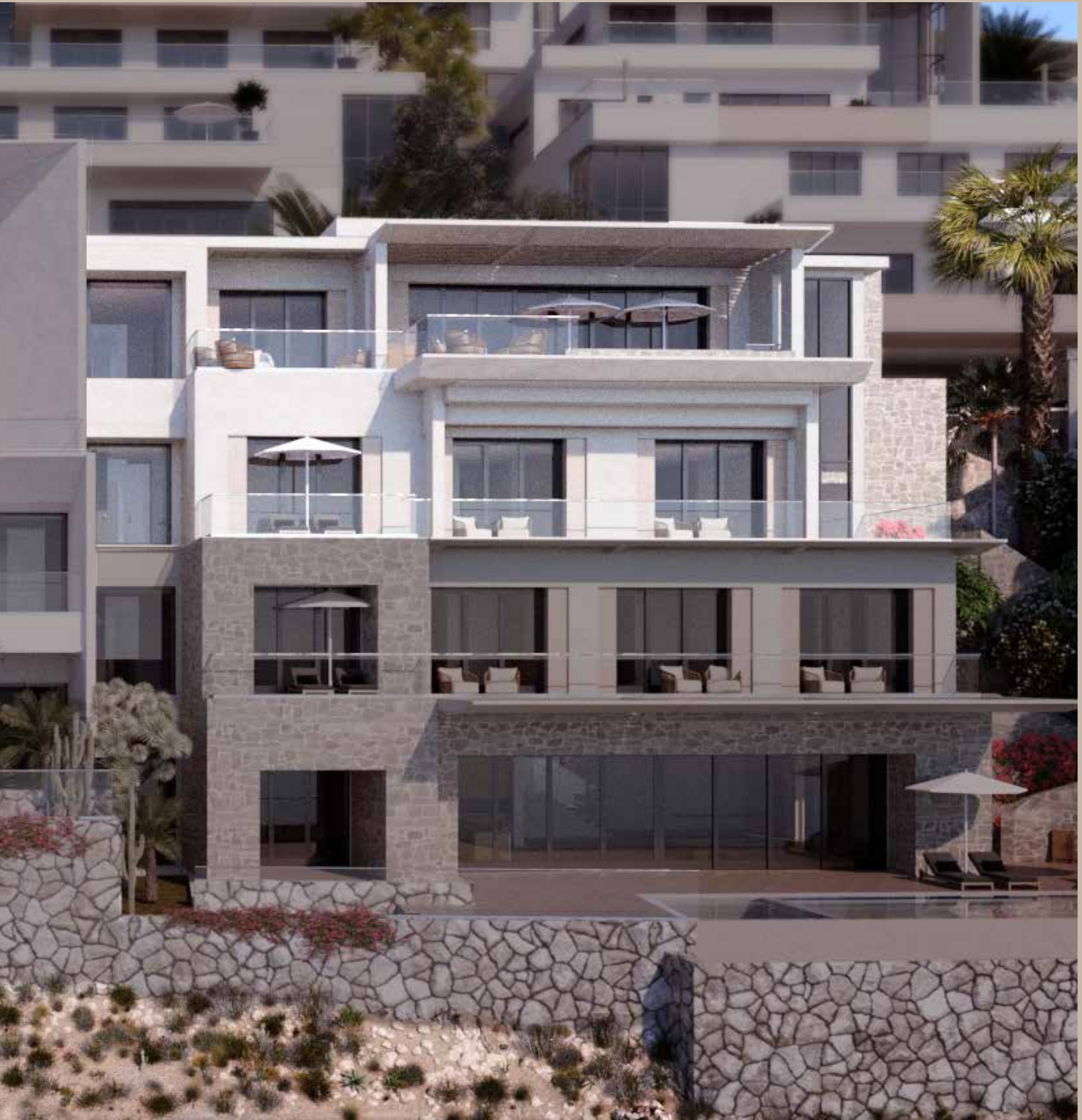


UPPER LEVEL

BUILDING 2

UNIT B (Upper Unit) - 4 BED/4.5 BATH

| SQ FT AC | TERRACE | POOL | GARAGE |
|----------|---------|------|--------|
| 3,971    | 969     | 215  | 237    |





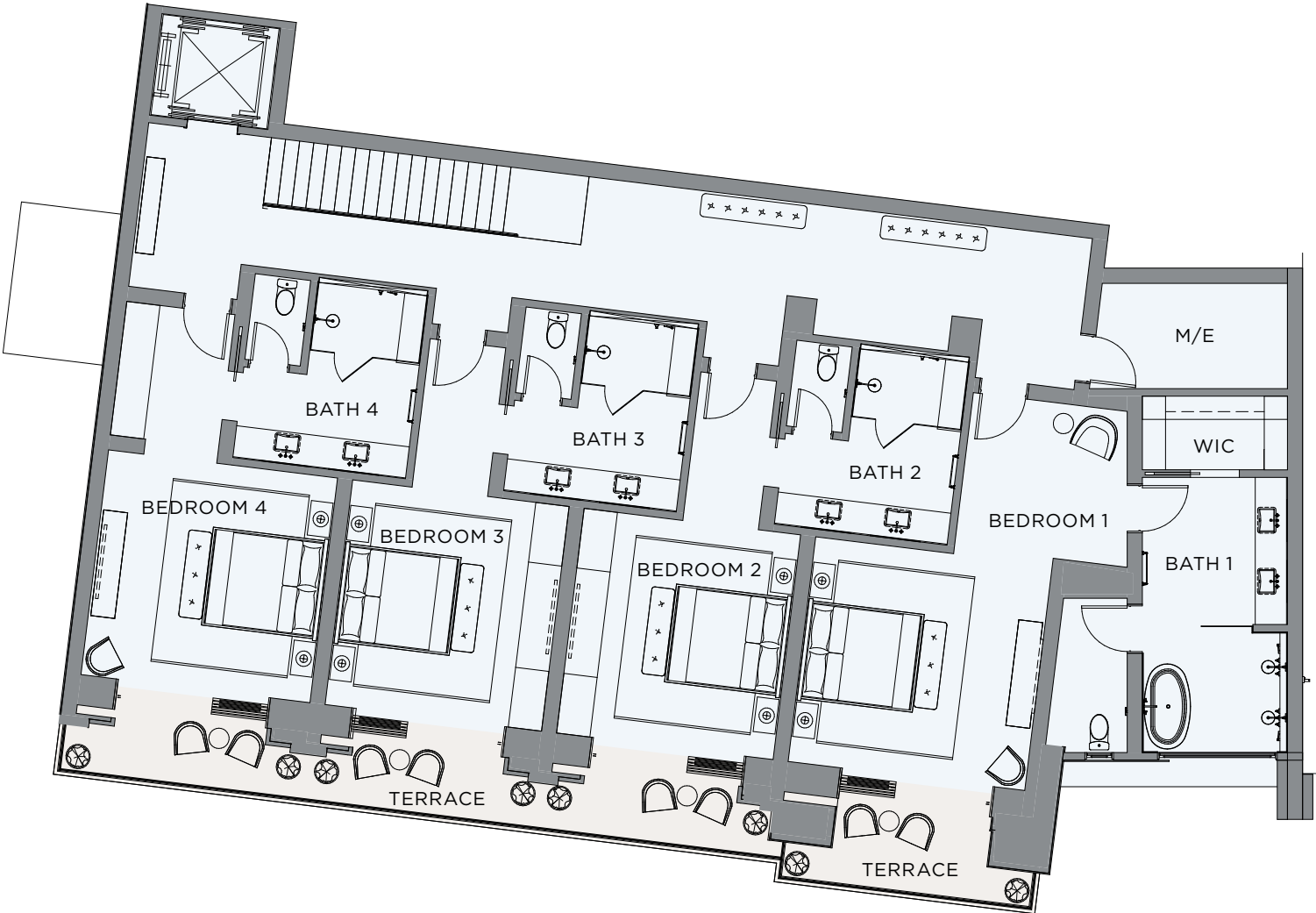
BUILDING 2

UNIT C (Lower Unit) - 5 BED/5.5 BATH

| SQ FT AC | TERRACE | POOL | GARAGE |
|----------|---------|------|--------|
| 4,991    | 2,271   | 487  | 301    |



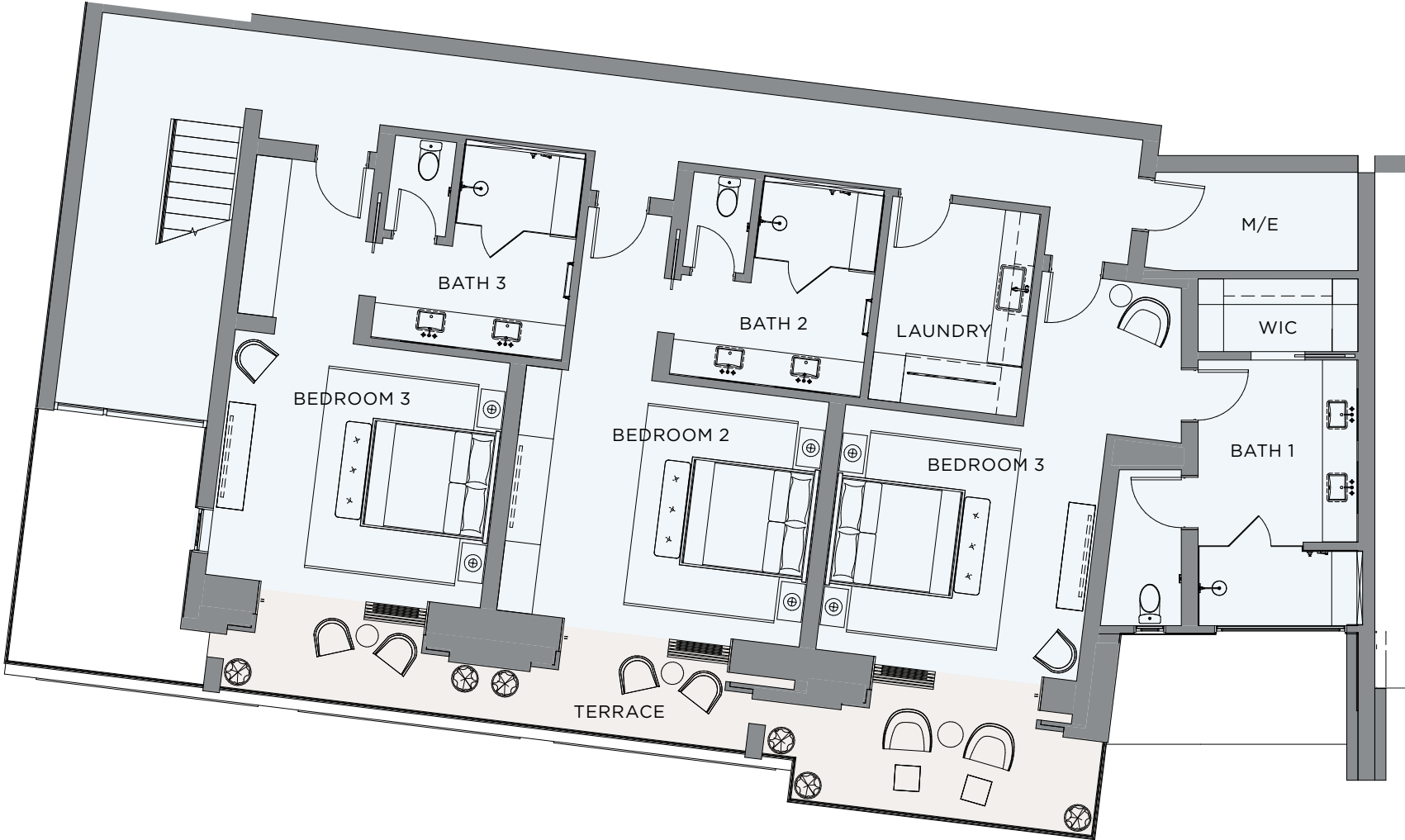
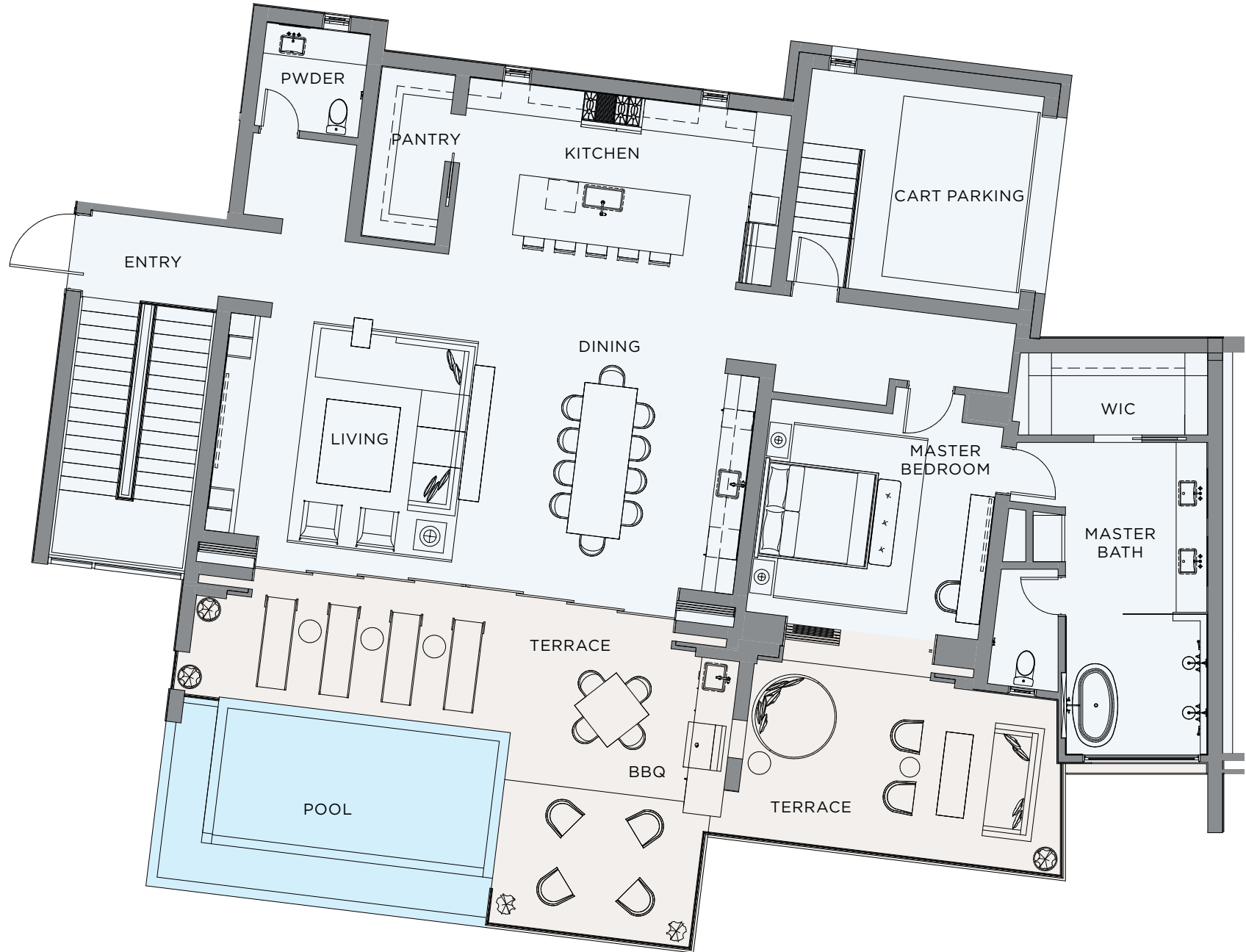
ENTRY LEVEL



UPPER LEVEL



ENTRY LEVEL



UPPER LEVEL

BUILDING 2

UNIT D (Upper Unit) - 4 BED/4.5 BATH

| SQ FT AC | TERRACE | POOL | GARAGE |
|----------|---------|------|--------|
| 4,092    | 969     | 215  | 258    |





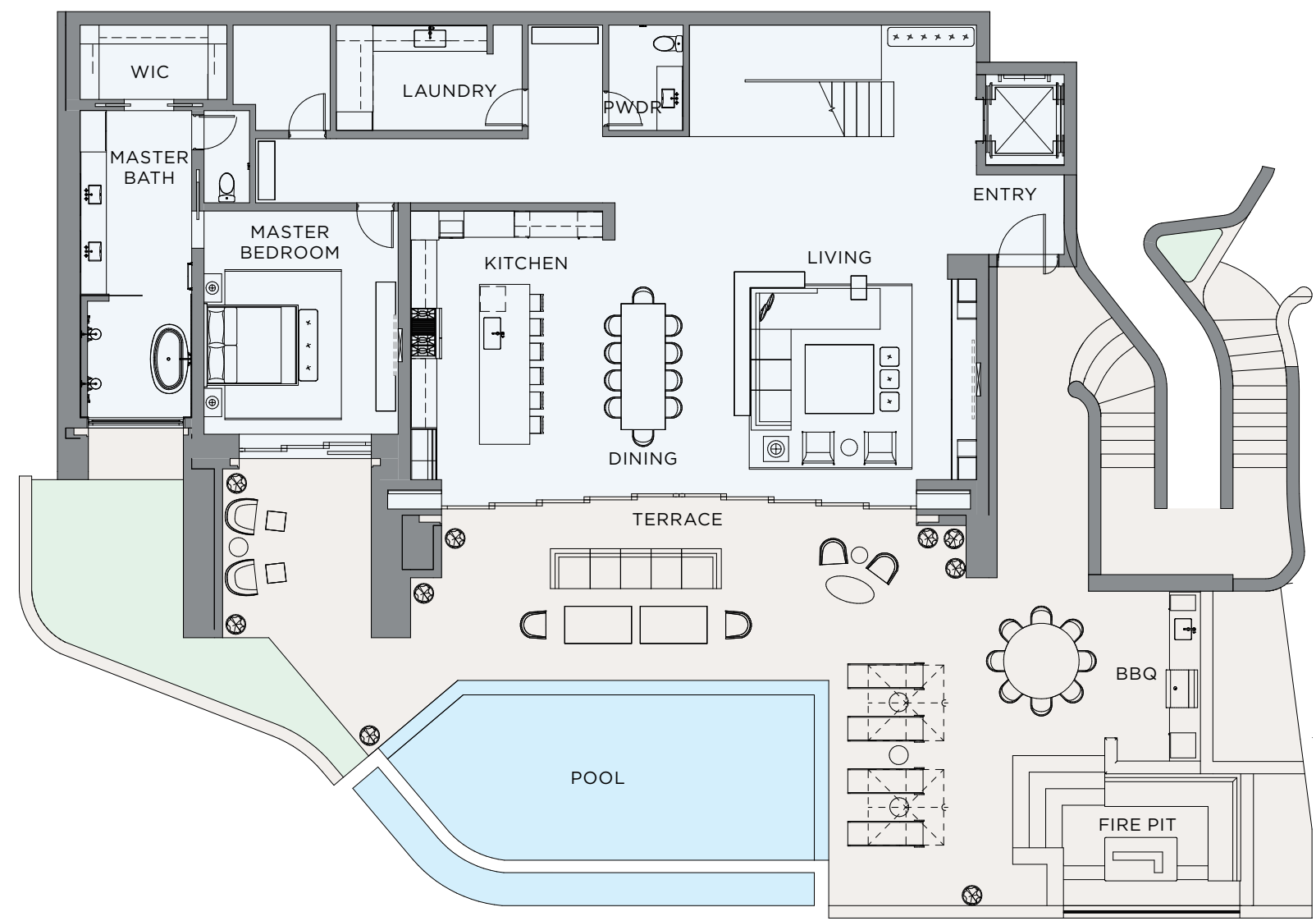
BUILDING 3

UNIT A (Lower Unit) - 4 BED/4.5 BATH

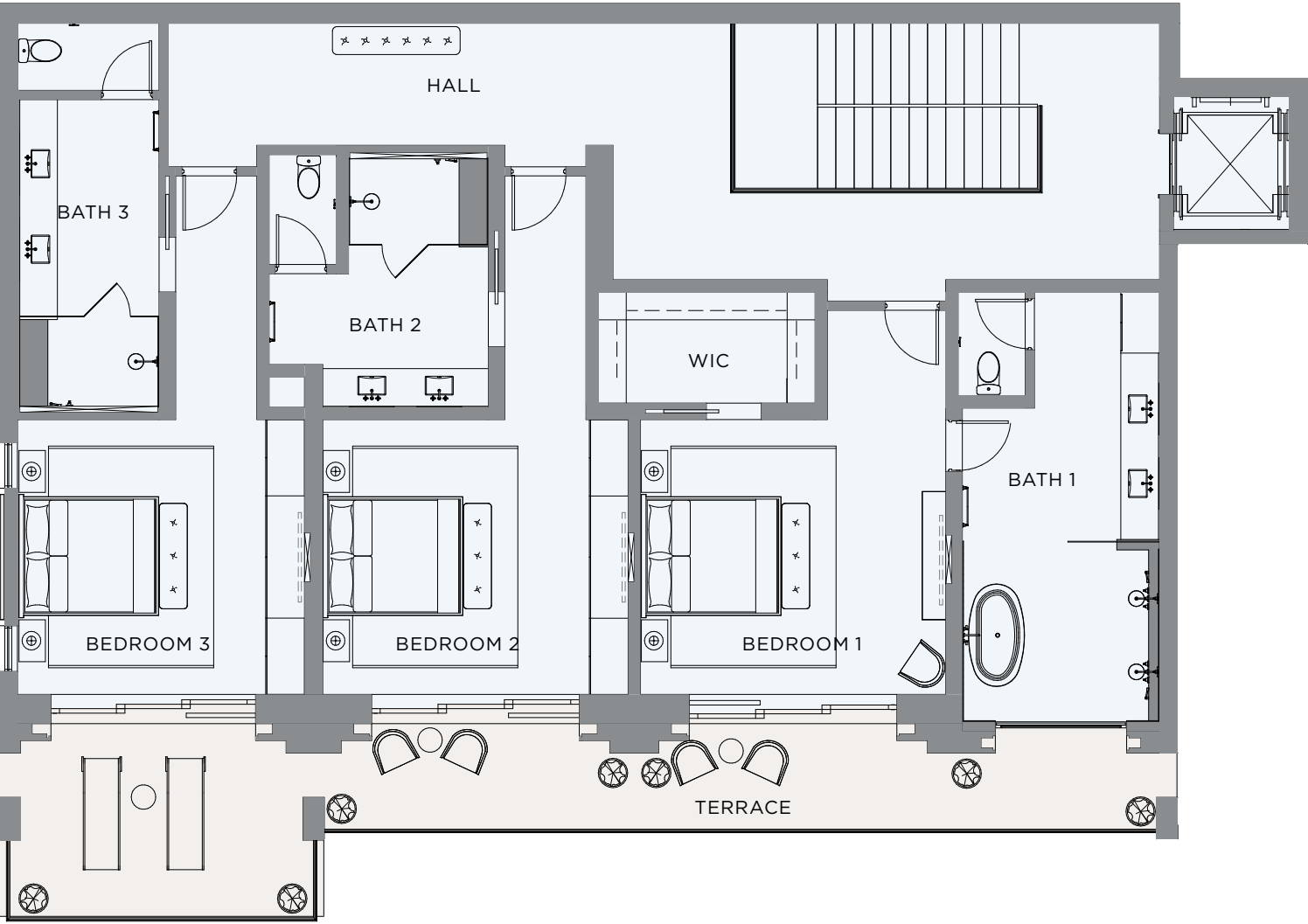
| SQ FT AC | TERRACE | POOL | GARAGE |
|----------|---------|------|--------|
| 4,420    | 1,776   | 570  | 301    |



ENTRY LEVEL

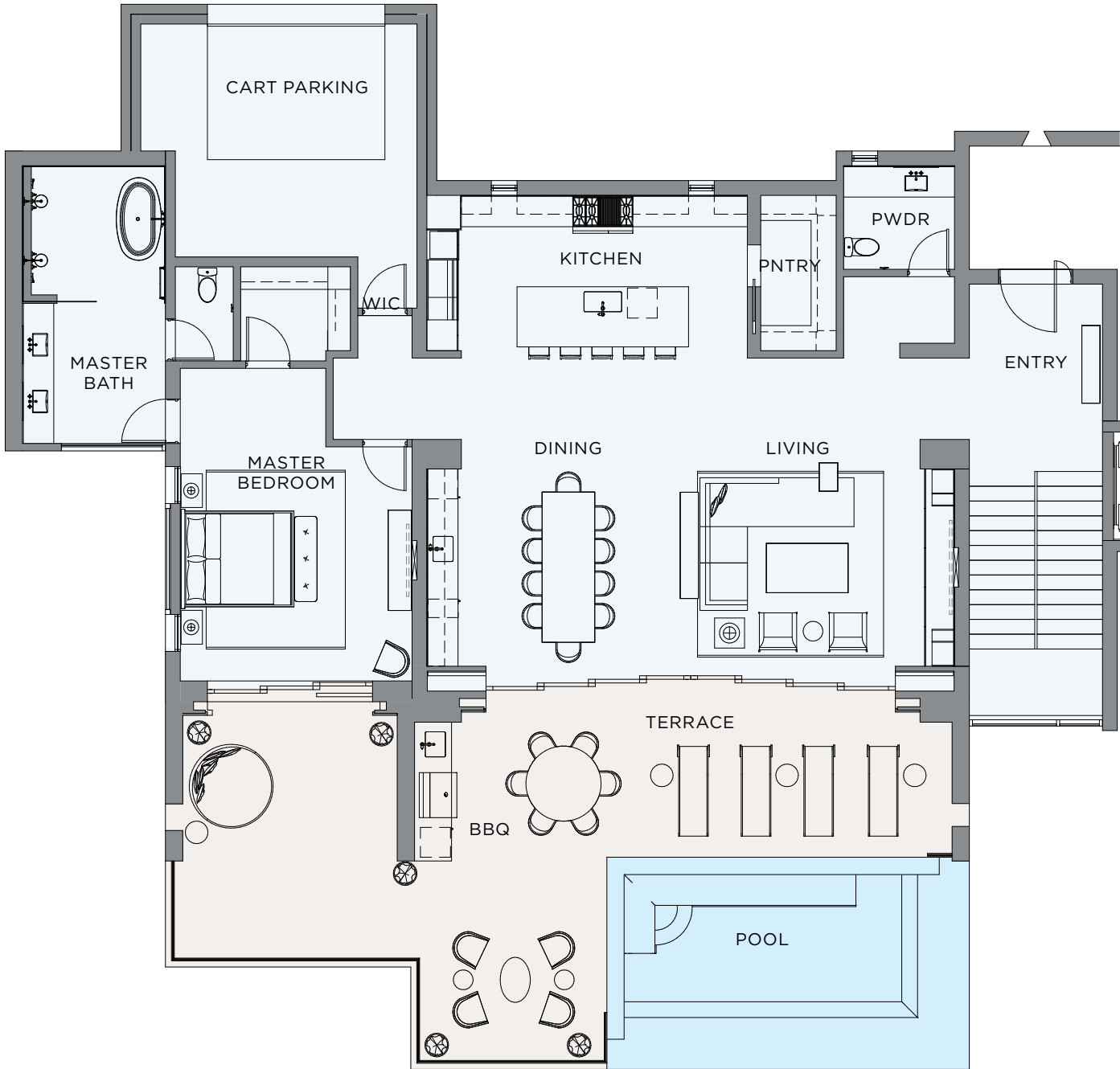


UPPER LEVEL

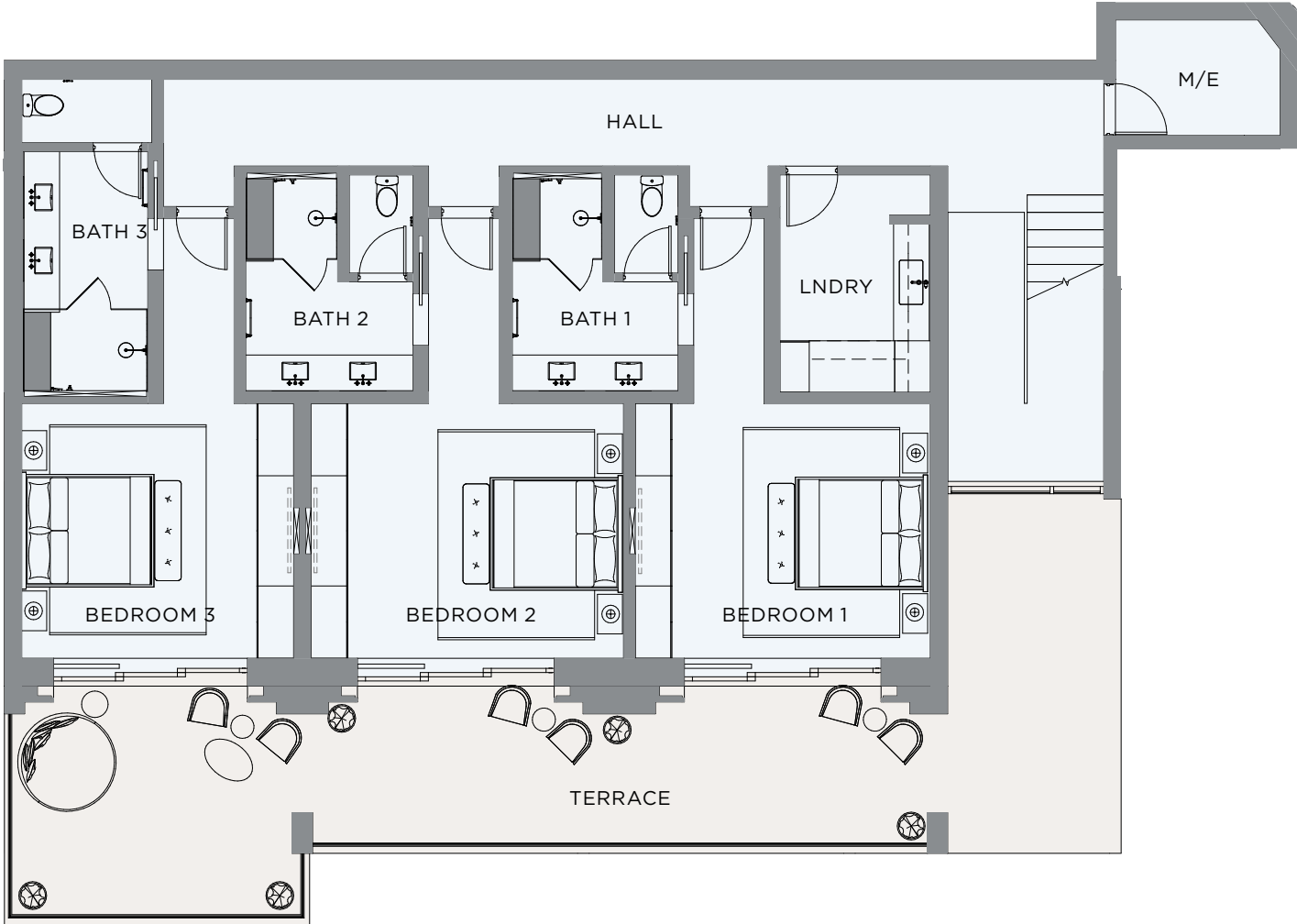




ENTRY LEVEL



UPPER LEVEL



BUILDING 3

UNIT B (Upper Unit) - 4 BED/4.5 BATH

| SQ FT AC | TERRACE | POOL | GARAGE |
|----------|---------|------|--------|
| 3,698    | 958     | 215  | 237    |







CHILENO BAY  
GOLF & BEACH CLUB

---

CHILENOBAYCLUB.COM

*These materials and the features and amenities described and depicted herein are based upon current development plans, which are subject to change without notice. Obtain the property report required by applicable government authorities before signing anything. No governmental agency has judged the merits or value, if any, of this property. This material shall not constitute an offer to sell in any state where prior registration is required.*