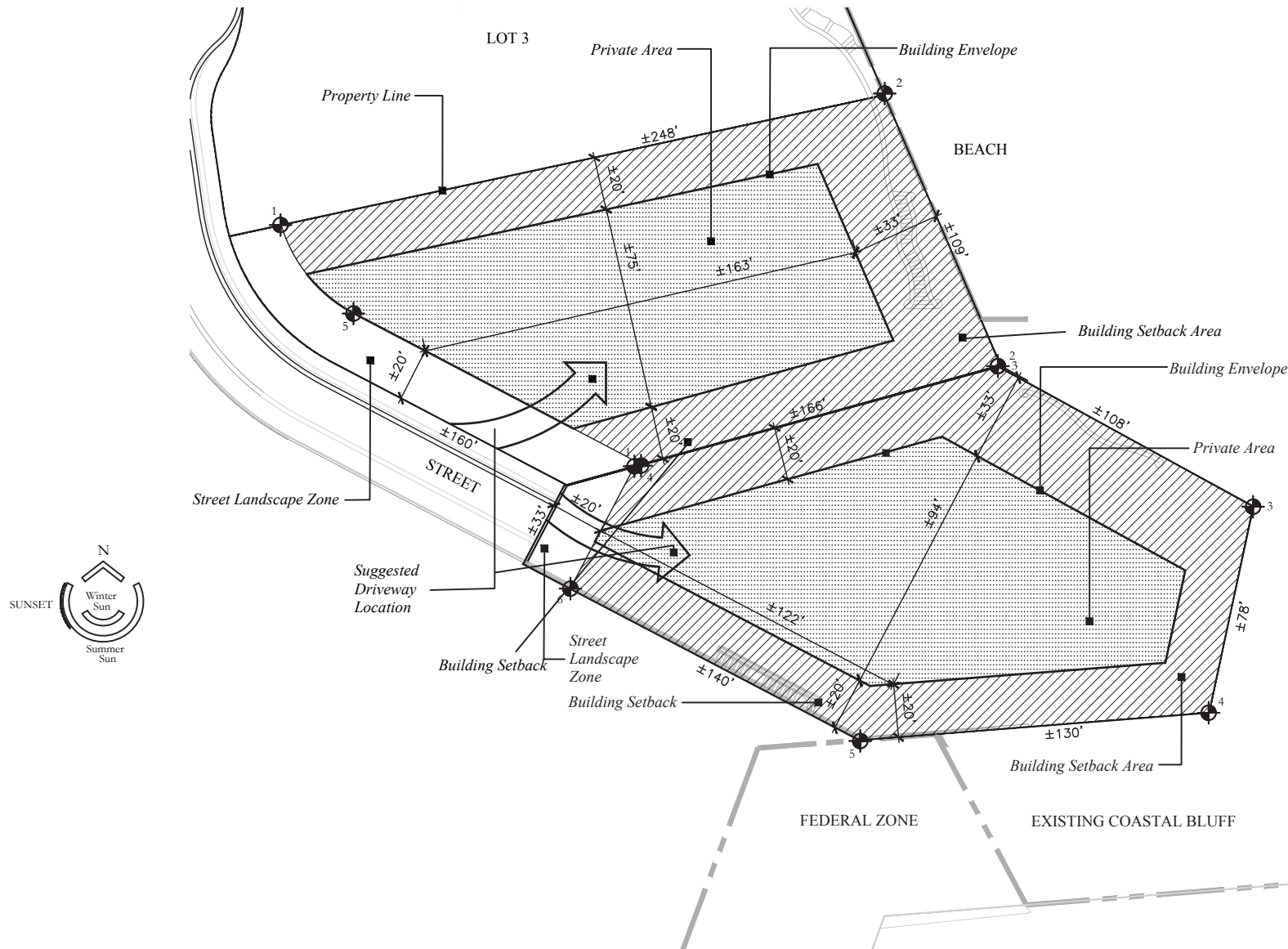


LA PRIVADA HOMESITE 1&2



CHILENO BAY
GOLF & BEACH CLUB



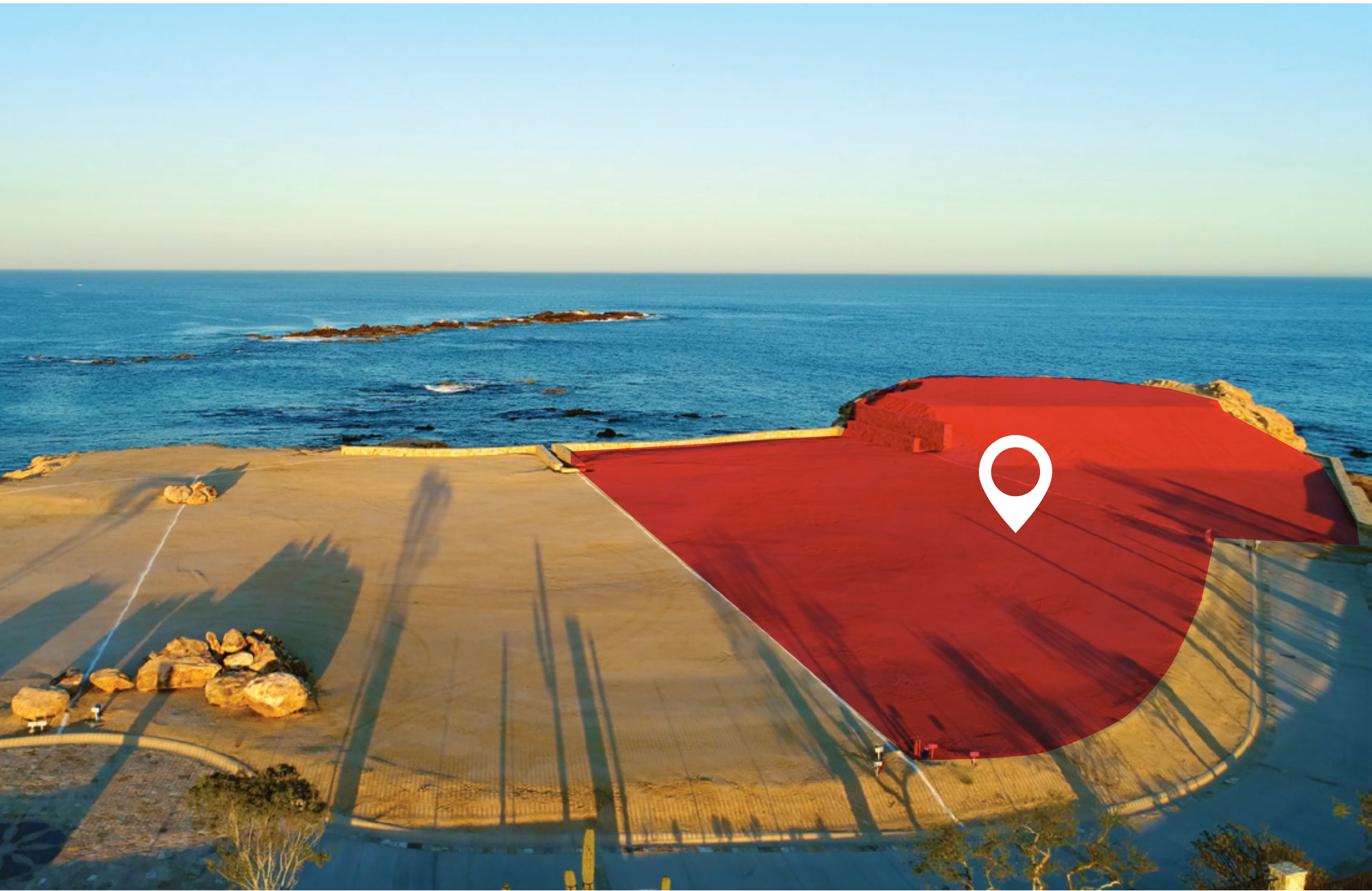
LA PRIVADA HOMESITE 1

Total Lot Area	25,003 SF
Building Envelope Area	12,270 SF
Total Building Area	24,180 SF
Two Story	
Maximum Pad Elevation	+12.00 Meters
Maximum Building Height	+18.00 Meters

LA PRIVADA HOMESITE 2

Total Lot Area	23,853 SF
Building Envelope Area	11,980 SF
Total Building Area	21,660 SF
Two Story	
Maximum Pad Elevation	+12.00 Meters
Maximum Building Height	+20.50 Meters

LA PRIVADA HOMESITE 1&2



LA PRIVADA HOMESITE 1&2





Recent views from lots

LA PRIVADA HOMESITE 1&2



LA PRIVADA
ESTATES

BEACH CLUB

- OCEAN FRONT DINING
- BEACH CLUB POOLS & LAP POOL
- SPA & FITNESS
- MEMBERS LOUNGE
- OUTDOOR PURSUITS
- BEACH BAR
- MEMBER SERVICES

CHILENO BAY GOLF & BEACH CLUB



Renowned for having the most incredible waters in all of Los Cabos, Chileno Bay's many protected swimming beaches offer the ultimate in Outdoor Pursuits. With 1,260 acres of natural desert terrain and two miles of spectacular coastline, Chileno Bay promises authentically inspired residences along Cabo's most celebrated coast and a Private Club featuring an intergenerational membership structure.

THE PRIVATE CLUB

- Private Tom Fazio signature 18-hole championship golf course.
- Pristine oceanfront beach club, featuring:
 - New 27,000 square foot spa
 - Fitness center
 - Three resort-style swimming pools + adult lap pool
 - Casual and fine dining options
 - Personal concierge assistance
 - Tennis and pickleball courts, volleyball and signature Discovery baseball diamond.
- Hiking and mountain bike trails for all levels



Photos Clockwise from Top Left: Chileno Bay OP Team, Beach Club Pool, Golf Course

LA PRIVADA HOMESITE 1&2



CHILENO BAY
GOLF & BEACH CLUB

FOR MORE INFORMATION PLEASE CONTACT
info@chilenobayclub.com

www.chilenobayclub.com