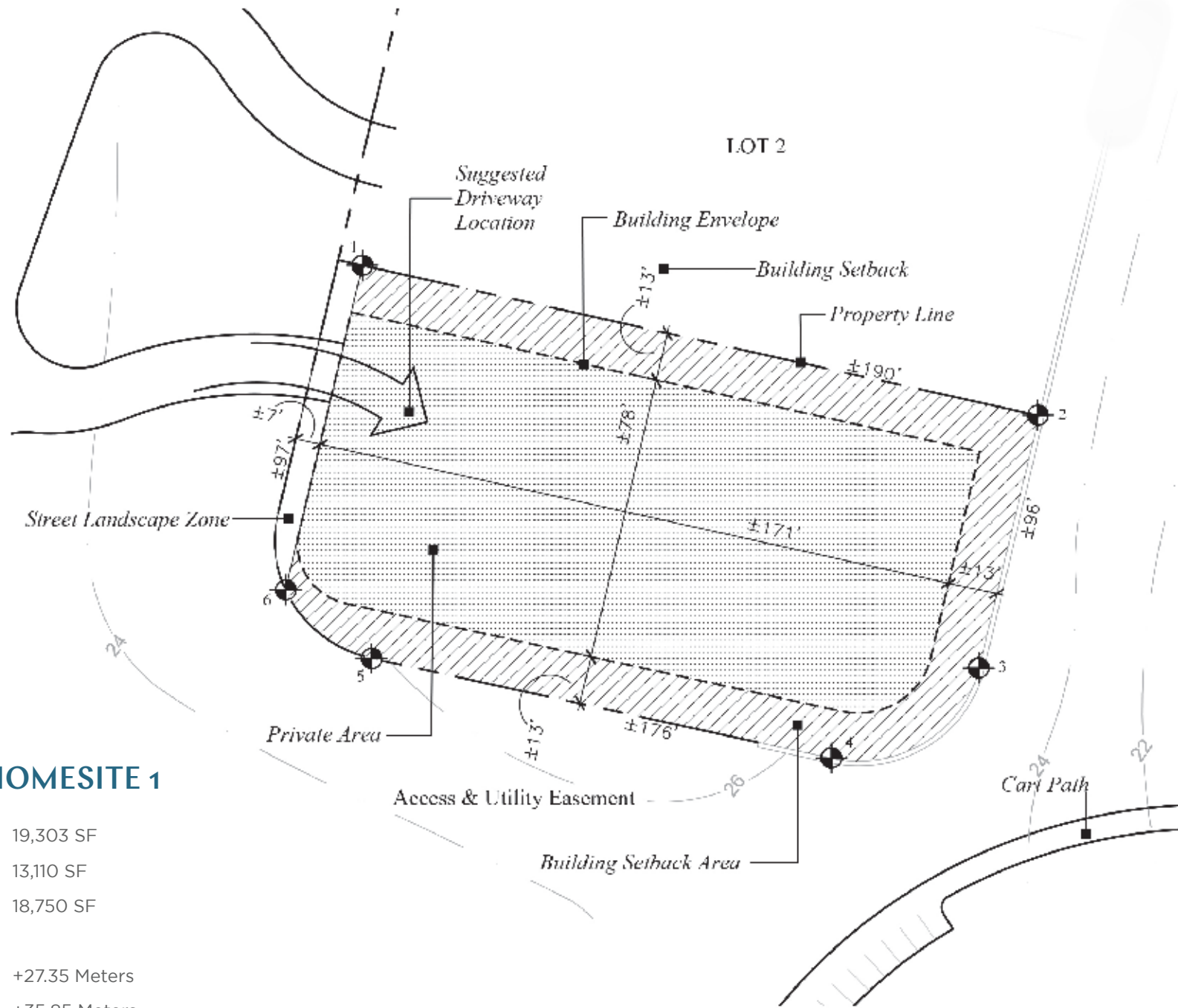
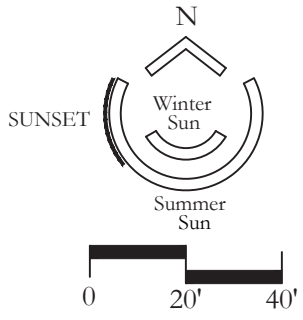


PARK HACIENDA HOMESITE 1





PARK HACIENDA HOMESITE 1

Total Lot Area	19,303 SF
Building Envelope Area	13,110 SF
Total Building Area	18,750 SF
One Story	
Maximum Pad Elevation	+27.35 Meters
Maximum Building Height	+35.85 Meters

PARK HACIENDA HOMESITE 1

The Park Haciendas are at the middle of all the action— a great location for families with diverse interest who want to be steps from all of their favorite activities. Perched over the Sports Park, this two-story home is a stone's throw to the Kid's Club, water park, ninja course, tennis & pickleball courts, movie theatre, restaurant and nearby Comfort Station. All eight homes in the Park Hacienda neighborhood will be a minimum of four bedrooms, and maximum of seven. Already approved through the Design Review Committee with several floor plans from which to choose, the Park Haciendas make it easy to select your lot and leave the design and build to the Chileno Bay Club.



Artist Rendering - Street Elevation



Artist Rendering: Terrace View

PARK HACIENDA HOMESITE 1



Artist Renderings



Artist Rendering: Terrace View

PARK HACIENDA HOMESITE 1

Park Haciendas

FOUR BEDROOMS



MAIN LEVEL

UPPER LEVEL

TOTAL LIVING SPACE	SQ. FT.
Interior	4,760
Terrace	1,791
Garage	827

Park Haciendas

FOUR BEDROOM WITH MEZZANINE



MAIN LEVEL



UPPER LEVEL

TOTAL LIVING SPACE	SO. FT.
Interior	5,289
Terrace	1,791
Garage	827



Park Haciendas

FIVE BEDROOM WITH CASITA



MAIN LEVEL

UPPER LEVEL

TOTAL LIVING SPACE	SQ. FT.
Interior	6,156
Terrace	1,991
Garage	827
Casita	595

Park Haciendas

SIX BEDROOM WITH CASITA



MAIN LEVEL



UPPER LEVEL

TOTAL LIVING SPACE	SQ. FT.
Interior	6,546
Terrace	2,264
Garage	827
Casita	595



PARK HACIENDA HOMESITE 1



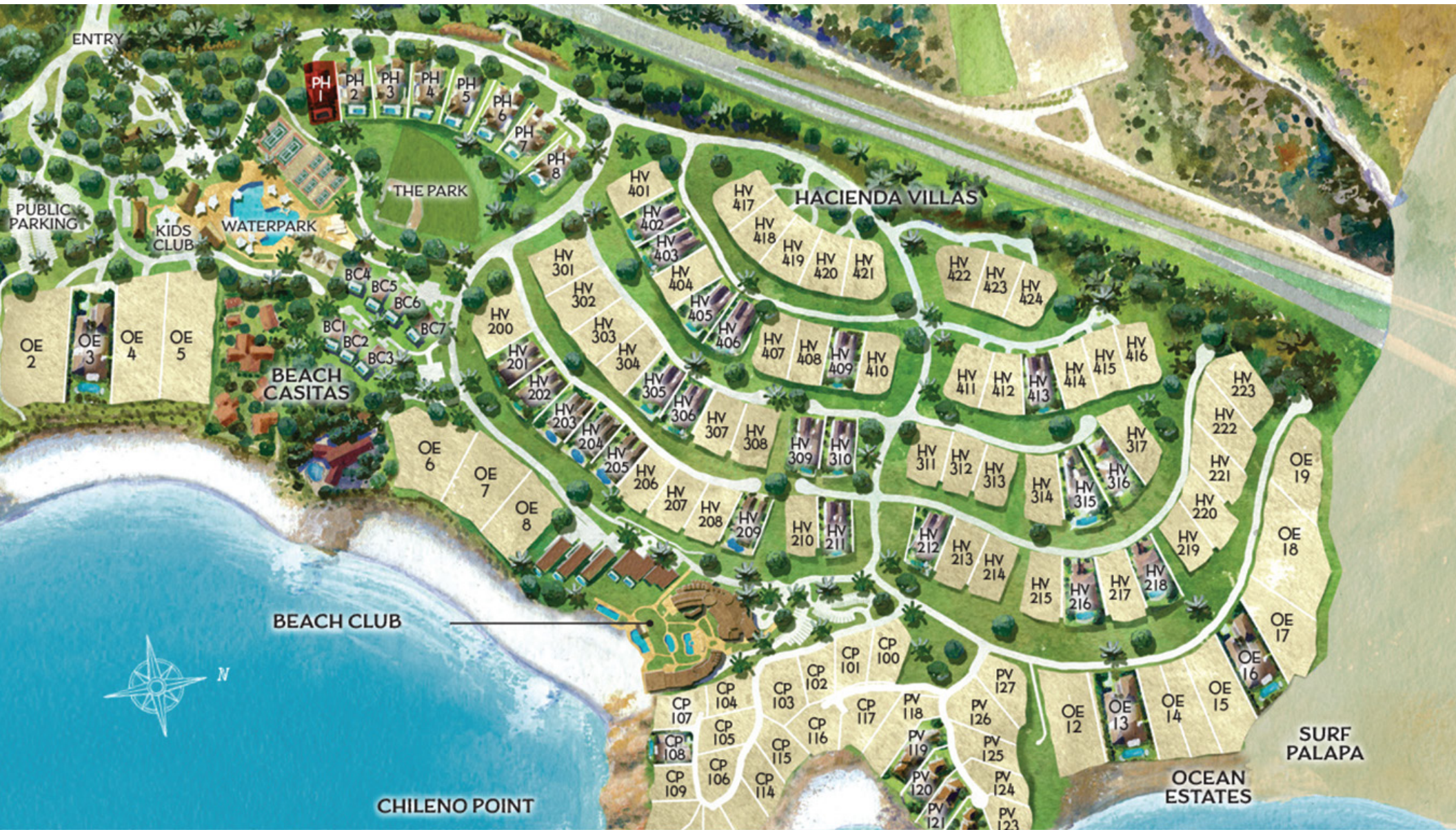
Aerial View of Park Hacienda Neighborhood

PARK HACIENDA HOMESITE 1



Aerial View of Park Hacienda Neighborhood

PARK HACIENDA HOMESITE 1



CHILENO BAY GOLF & BEACH CLUB



Renowned for having the most incredible waters in all of Los Cabos, Chileno Bay's many protected swimming beaches offer the ultimate in Outdoor Pursuits. With 1,260 acres of natural desert terrain and two miles of spectacular coastline, Chileno Bay promises authentically inspired residences along Cabo's most celebrated coast and a Private Club featuring an intergenerational membership structure.

THE PRIVATE CLUB

- Private Tom Fazio signature 18-hole championship golf course.
- Pristine oceanfront beach club, featuring:
 - New 27,000 square foot spa
 - Fitness center
 - Three resort-style swimming pools + adult lap pool
 - Casual and fine dining options
 - Personal concierge assistance
 - Tennis and pickleball courts, volleyball and signature Discovery baseball diamond.
- Hiking and mountain bike trails for all levels



Photos Clockwise from Top Left: Chileno Bay OP Team, Beach Club Pool, Golf Course

PARK HACIENDA HOMESITE 1



CHILENO BAY
GOLF & BEACH CLUB

FOR MORE INFORMATION PLEASE CONTACT
info@chilenobayclub.com

www.chilenobayclub.com